



ELECTRONIC COPY

LG770626014
Report verification at igi.org



February 20, 2026

IGI Report Number **LG770626014**

Description **LABORATORY GROWN DIAMOND**

Shape and Cutting Style **PEAR BRILLIANT**

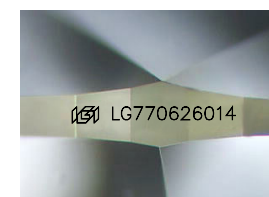
Measurements **12.40 X 7.70 X 4.59 MM**

GRADING RESULTS

Carat Weight **2.50 CARATS**

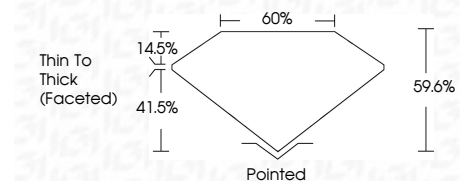
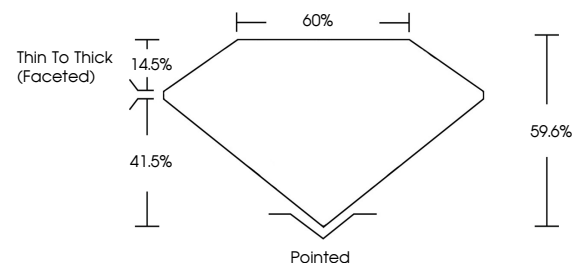
Color Grade **F**

Clarity Grade **VVS 1**

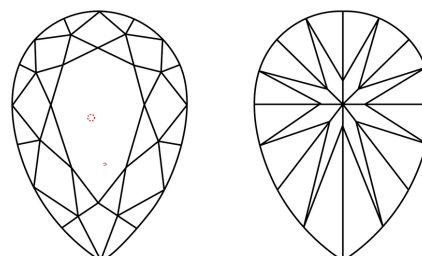


Sample Image Used

PROPORTIONS



CLARITY CHARACTERISTICS



KEY TO SYMBOLS

Red symbols indicate internal characteristics.
Green symbols indicate external characteristics.

COLOR

D E F G H I J Faint Very Light Light

CLARITY

FL	IF	VS ¹⁻²	VS ¹⁻²	SI ¹⁻²	I ¹⁻³
Flawless	Internally Flawless	Very Very Slightly Included	Very Slightly Included	Slightly Included	Included

ADDITIONAL GRADING INFORMATION

Polish **EXCELLENT**

Symmetry **EXCELLENT**

Fluorescence **NONE**

Inscription(s) **IGI LG770626014**

Comments: This Laboratory Grown Diamond was created by Chemical Vapor Deposition (CVD) growth process. Type IIa



February 20, 2026	IGI Report No LG770626014	PEAR BRILLIANT	2.50 CARATS	F	VVS 1	60%	59%	Pointed	EXCELLENT	EXCELLENT	NONE	IGI LG770626014
12.40 X 7.70 X 4.59 MM	Carat Weight	Color Grade	Clarity Grade	Depth	Table	Girdle	Thin To Thick (Faceted)	Culet	Polish	Symmetry	Fluorescence	Inscription(s)

Comments: This Laboratory Grown Diamond was created by Chemical Vapor Deposition (CVD) growth process. Type IIa