



**ELECTRONIC COPY**

LG770625800  
Report verification at igi.org



February 13, 2026

IGI Report Number **LG770625800**

Description **LABORATORY GROWN DIAMOND**

Shape and Cutting Style **EMERALD CUT**

Measurements **15.54 X 10.24 X 6.66 MM**

**GRADING RESULTS**

Carat Weight **10.56 CARATS**

Color Grade **E**

Clarity Grade **VVS 2**

February 13, 2026  
IGI Report Number **LG770625800**  
Description **LABORATORY GROWN DIAMOND**  
Shape and Cutting Style **EMERALD CUT**  
Measurements **15.54 X 10.24 X 6.66 MM**

**GRADING RESULTS**

Carat Weight **10.56 CARATS**

Color Grade **E**

Clarity Grade **VVS 2**

**ADDITIONAL GRADING INFORMATION**

Polish **EXCELLENT**

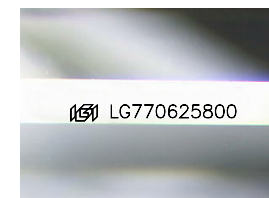
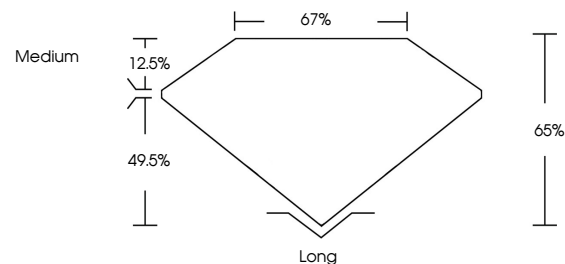
Symmetry **EXCELLENT**

Fluorescence **NONE**

Inscription(s) **IGI LG770625800**

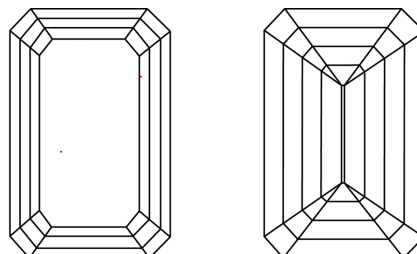
Comments: This Laboratory Grown Diamond was created by Chemical Vapor Deposition (CVD) growth process. Type IIa

**PROPORTIONS**



Sample Image Used

**CLARITY CHARACTERISTICS**



**KEY TO SYMBOLS**

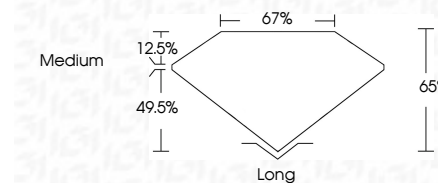
Red symbols indicate internal characteristics.  
Green symbols indicate external characteristics.

**COLOR**

D E F G H I J Faint Very Light Light

**CLARITY**

FL	IF	VVS <sup>1-2</sup>	VS <sup>1-2</sup>	SI <sup>1-2</sup>	I <sup>1-3</sup>
Flawless	Internally Flawless	Very Very Slightly Included	Very Slightly Included	Slightly Included	Included



**ADDITIONAL GRADING INFORMATION**

Polish **EXCELLENT**

Symmetry **EXCELLENT**

Fluorescence **NONE**

Inscription(s) **IGI LG770625800**

Comments: This Laboratory Grown Diamond was created by Chemical Vapor Deposition (CVD) growth process. Type IIa



**IGI**



February 13, 2026  
IGI Report No LG770625800  
**EMERALD CUT**  
15.54 X 10.24 X 6.66 MM  
10.56 CARATS  
E  
VVS 2  
65%  
67%  
Medium  
Long  
EXCELLENT  
EXCELLENT  
NONE  
IGI LG770625800  
Comments: This Laboratory Grown Diamond was created by Chemical Vapor Deposition (CVD) growth process. Type IIa