



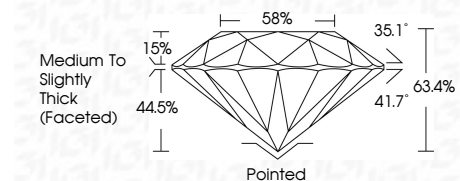
ELECTRONIC COPY

LG770625498
Report verification at igi.org



February 17, 2026
IGI Report Number **LG770625498**
Description **LABORATORY GROWN DIAMOND**
Shape and Cutting Style **ROUND BRILLIANT**
Measurements **7.25 - 7.30 X 4.62 MM**

GRADING RESULTS
Carat Weight **1.51 CARAT**
Color Grade **E**
Clarity Grade **VS 2**
Cut Grade **EXCELLENT**



ADDITIONAL GRADING INFORMATION
Polish **EXCELLENT**
Symmetry **EXCELLENT**
Fluorescence **NONE**
Inscription(s) **(IGI) LG770625498**
Comments: This Laboratory Grown Diamond was created by Chemical Vapor Deposition (CVD) growth process. Type IIa



February 17, 2026
IGI Report No LG770625498
ROUND BRILLIANT
7.25 - 7.30 X 4.62 MM
1.51 CARAT
E
VS 2
EXCELLENT
63.4%
58%
Medium To Slightly Thick (Faceted)
Pointed
EXCELLENT
EXCELLENT
NONE
IGI LG770625498
Comments: This Laboratory Grown Diamond was created by Chemical Vapor Deposition (CVD) growth process. Type IIa

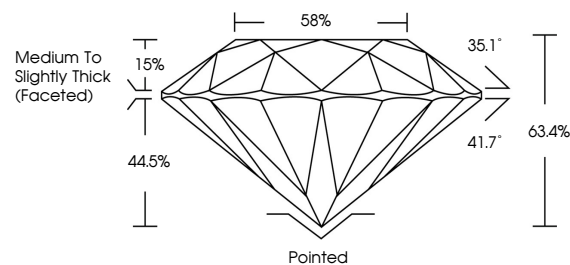
February 17, 2026
IGI Report Number **LG770625498**
Description **LABORATORY GROWN DIAMOND**
Shape and Cutting Style **ROUND BRILLIANT**
Measurements **7.25 - 7.30 X 4.62 MM**

GRADING RESULTS
Carat Weight **1.51 CARAT**
Color Grade **E**
Clarity Grade **VS 2**
Cut Grade **EXCELLENT**

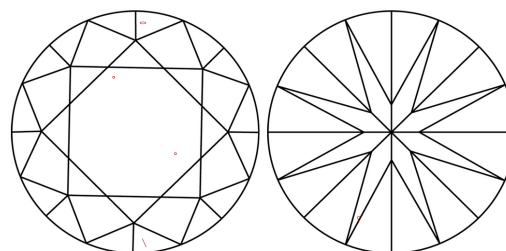
ADDITIONAL GRADING INFORMATION
Polish **EXCELLENT**
Symmetry **EXCELLENT**
Fluorescence **NONE**
Inscription(s) **(IGI) LG770625498**

Comments: This Laboratory Grown Diamond was created by Chemical Vapor Deposition (CVD) growth process. Type IIa

PROPORTIONS

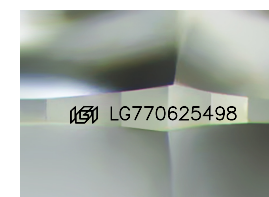


CLARITY CHARACTERISTICS



KEY TO SYMBOLS

Red symbols indicate internal characteristics.
Green symbols indicate external characteristics.



Sample Image Used

COLOR

D E F G H I J Faint Very Light Light

CLARITY

FL	IF	VS ¹⁻²	VS ¹⁻²	SI ¹⁻²	I ¹⁻³
Flawless	Internally Flawless	Very Very Slightly Included	Very Slightly Included	Slightly Included	Included

