



**ELECTRONIC COPY**

LG770624754  
Report verification at igi.org



February 13, 2026

IGI Report Number **LG770624754**

Description **LABORATORY GROWN DIAMOND**

Shape and Cutting Style **ROUND BRILLIANT**

Measurements **7.29 - 7.33 X 4.49 MM**

**GRADING RESULTS**

Carat Weight **1.50 CARAT**

Color Grade **G**

Clarity Grade **VS 1**

Cut Grade **EXCELLENT**

February 13, 2026  
IGI Report Number **LG770624754**  
Description **LABORATORY GROWN DIAMOND**  
Shape and Cutting Style **ROUND BRILLIANT**  
Measurements **7.29 - 7.33 X 4.49 MM**

**GRADING RESULTS**

Carat Weight **1.50 CARAT**

Color Grade **G**

Clarity Grade **VS 1**

Cut Grade **EXCELLENT**

**ADDITIONAL GRADING INFORMATION**

Polish **EXCELLENT**

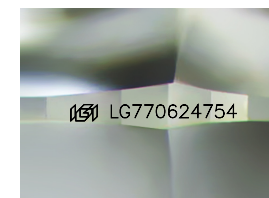
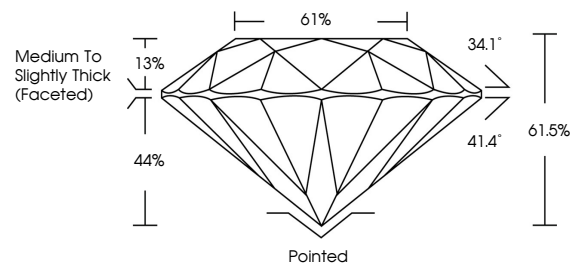
Symmetry **EXCELLENT**

Fluorescence **NONE**

Inscription(s) **IGI LG770624754**

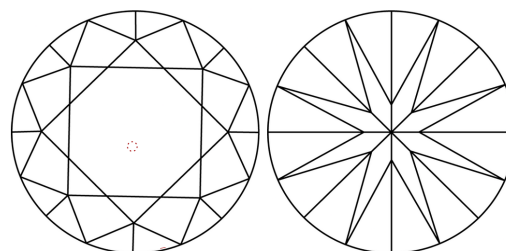
Comments: This Laboratory Grown Diamond was created by Chemical Vapor Deposition (CVD) growth process. Type IIa

**PROPORTIONS**



Sample Image Used

**CLARITY CHARACTERISTICS**



**KEY TO SYMBOLS**

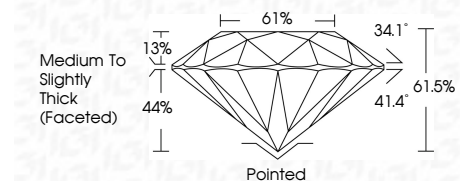
Red symbols indicate internal characteristics.  
Green symbols indicate external characteristics.

**COLOR**

D E F G H I J Faint Very Light Light

**CLARITY**

FL	IF	VS <sup>1-2</sup>	VS <sup>1-2</sup>	SI <sup>1-2</sup>	I <sup>1-3</sup>
Flawless	Internally Flawless	Very Very Slightly Included	Very Slightly Included	Slightly Included	Included



**ADDITIONAL GRADING INFORMATION**

Polish **EXCELLENT**

Symmetry **EXCELLENT**

Fluorescence **NONE**

Inscription(s) **IGI LG770624754**

Comments: This Laboratory Grown Diamond was created by Chemical Vapor Deposition (CVD) growth process. Type IIa



**IGI**



February 13, 2026  
IGI Report No LG770624754  
**ROUND BRILLIANT**  
1.50 CARAT  
Color Grade **G**  
Clarity Grade **VS 1**  
Cut Grade **EXCELLENT**  
Depth **61.5%**  
Table **61%**  
Girdle **Medium To Slightly Thick (Faceted)**  
Culet **Pointed**  
Polish **EXCELLENT**  
Symmetry **EXCELLENT**  
Fluorescence **NONE**  
Inscription(s) **IGI LG770624754**  
Comments: This Laboratory Grown Diamond was created by Chemical Vapor Deposition (CVD) growth process. Type IIa