



**ELECTRONIC COPY**

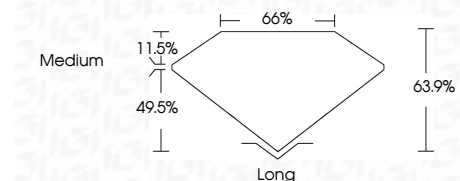
LG770623459  
Report verification at igi.org



February 12, 2026  
IGI Report Number **LG770623459**  
Description **LABORATORY GROWN DIAMOND**

Shape and Cutting Style **EMERALD CUT**  
Measurements **13.18 X 9.09 X 5.81 MM**

**GRADING RESULTS**  
Carat Weight **7.09 CARATS**  
Color Grade **F**  
Clarity Grade **VVS 2**



**ADDITIONAL GRADING INFORMATION**  
Polish **EXCELLENT**  
Symmetry **EXCELLENT**  
Fluorescence **NONE**  
Inscription(s) **IGI LG770623459**  
Comments: This Laboratory Grown Diamond was created by Chemical Vapor Deposition (CVD) growth process. Type IIa



February 12, 2026  
IGI Report No LG770623459  
**EMERALD CUT**  
13.18 X 9.09 X 5.81 MM  
7.09 CARATS  
F  
VVS 2  
63.9%  
65%  
Medium  
Long  
EXCELLENT  
EXCELLENT  
NONE  
IGI LG770623459  
Comments: This Laboratory Grown Diamond was created by Chemical Vapor Deposition (CVD) growth process. Type IIa

**LABORATORY GROWN DIAMOND REPORT**

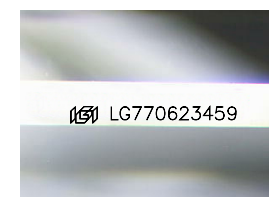
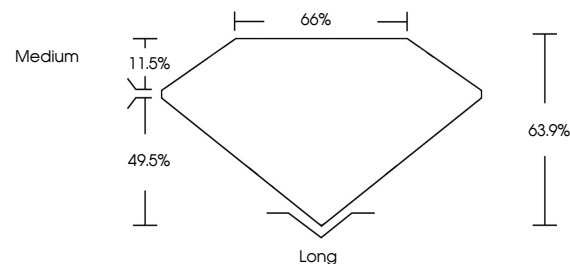
February 12, 2026  
IGI Report Number **LG770623459**  
Description **LABORATORY GROWN DIAMOND**  
Shape and Cutting Style **EMERALD CUT**  
Measurements **13.18 X 9.09 X 5.81 MM**

**GRADING RESULTS**  
Carat Weight **7.09 CARATS**  
Color Grade **F**  
Clarity Grade **VVS 2**

**ADDITIONAL GRADING INFORMATION**  
Polish **EXCELLENT**  
Symmetry **EXCELLENT**  
Fluorescence **NONE**  
Inscription(s) **IGI LG770623459**

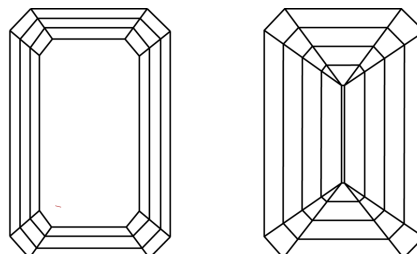
Comments: This Laboratory Grown Diamond was created by Chemical Vapor Deposition (CVD) growth process. Type IIa

**PROPORTIONS**



Sample Image Used

**CLARITY CHARACTERISTICS**



**KEY TO SYMBOLS**

Red symbols indicate internal characteristics.  
Green symbols indicate external characteristics.

**COLOR**

D E F G H I J Faint Very Light Light

**CLARITY**

FL	IF	VVS <sup>1-2</sup>	VS <sup>1-2</sup>	SI <sup>1-2</sup>	I <sup>1-3</sup>
Flawless	Internally Flawless	Very Very Slightly Included	Very Slightly Included	Slightly Included	Included

