



**ELECTRONIC COPY**

LG770622627  
Report verification at igi.org



February 12, 2026

IGI Report Number **LG770622627**

Description **LABORATORY GROWN DIAMOND**

Shape and Cutting Style **ROUND BRILLIANT**

Measurements **7.31 - 7.36 X 4.48 MM**

**GRADING RESULTS**

Carat Weight **1.50 CARAT**

Color Grade **G**

Clarity Grade **VS 2**

Cut Grade **EXCELLENT**

February 12, 2026

IGI Report Number **LG770622627**

Description **LABORATORY GROWN DIAMOND**

Shape and Cutting Style **ROUND BRILLIANT**

Measurements **7.31 - 7.36 X 4.48 MM**

**GRADING RESULTS**

Carat Weight **1.50 CARAT**

Color Grade **G**

Clarity Grade **VS 2**

Cut Grade **EXCELLENT**

**ADDITIONAL GRADING INFORMATION**

Polish **EXCELLENT**

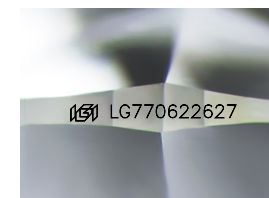
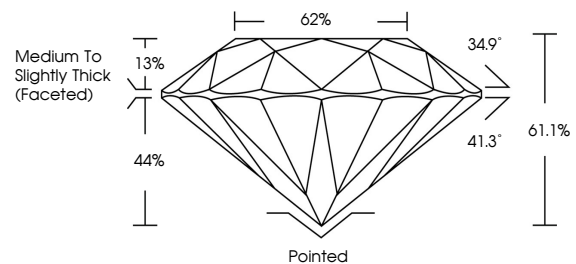
Symmetry **EXCELLENT**

Fluorescence **NONE**

Inscription(s) **IGI LG770622627**

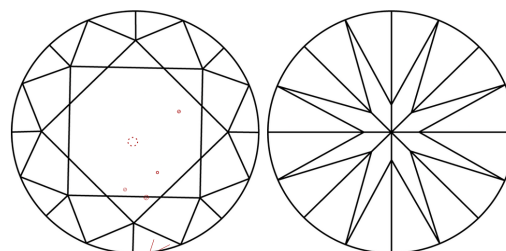
Comments: This Laboratory Grown Diamond was created by Chemical Vapor Deposition (CVD) growth process.  
Type IIa

**PROPORTIONS**



Sample Image Used

**CLARITY CHARACTERISTICS**



**KEY TO SYMBOLS**

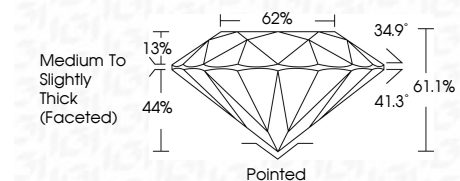
Red symbols indicate internal characteristics.  
Green symbols indicate external characteristics.

**COLOR**

D E F G H I J Faint Very Light Light

**CLARITY**

FL	IF	VS <sup>1-2</sup>	VS <sup>1-2</sup>	SI <sup>1-2</sup>	I <sup>1-3</sup>
Flawless	Internally Flawless	Very Very Slightly Included	Very Slightly Included	Slightly Included	Included



**ADDITIONAL GRADING INFORMATION**

Polish **EXCELLENT**

Symmetry **EXCELLENT**

Fluorescence **NONE**

Inscription(s) **IGI LG770622627**

Comments: This Laboratory Grown Diamond was created by Chemical Vapor Deposition (CVD) growth process.  
Type IIa



**IGI**



February 12, 2026  
IGI Report No LG770622627  
ROUND BRILLIANT

1.50 CARAT  
Color Grade **G**  
Clarity Grade **VS 2**  
Depth **61.1%**  
Table **62%**  
Girdle **Medium To Slightly Thick (Faceted)**

Culet **Pointed**  
Polish **EXCELLENT**  
Symmetry **EXCELLENT**  
Fluorescence **NONE**  
Inscription(s) **IGI LG770622627**

Comments: This Laboratory Grown Diamond was created by Chemical Vapor Deposition (CVD) growth process.  
Type IIa