



ELECTRONIC COPY

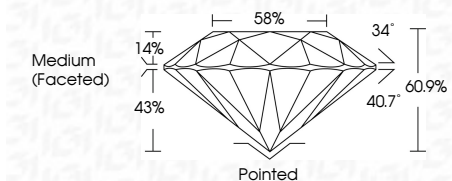
LG770621812 Report verification at igi.org



February 12, 2026 IGI Report Number LG770621812 Description LABORATORY GROWN DIAMOND Shape and Cutting Style ROUND BRILLIANT Measurements 8.08 - 8.13 X 4.94 MM

GRADING RESULTS

Carat Weight 2.00 CARATS Color Grade FANCY INTENSE PINK Clarity Grade VS 2 Cut Grade IDEAL



ADDITIONAL GRADING INFORMATION

Polish EXCELLENT Symmetry EXCELLENT Fluorescence STRONG Inscription(s) IGI LG770621812 Comments: This Laboratory Grown Diamond was created by Chemical Vapor Deposition (CVD) growth process. Indications of post-growth treatment.



February 12, 2026 IGI Report No LG770621812 ROUND BRILLIANT 8.08 - 8.13 X 4.94 MM 2.00 CARATS FANCY INTENSE PINK VS 2 IDEAL 60.9% 58% Medium (Faceted) Pointed EXCELLENT EXCELLENT STRONG IGI LG770621812 Comments: This Laboratory Grown Diamond was created by Chemical Vapor Deposition (CVD) growth process. Indications of post-growth treatment.

February 12, 2026 IGI Report Number LG770621812 Description LABORATORY GROWN DIAMOND Shape and Cutting Style ROUND BRILLIANT Measurements 8.08 - 8.13 X 4.94 MM

GRADING RESULTS

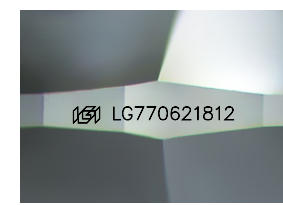
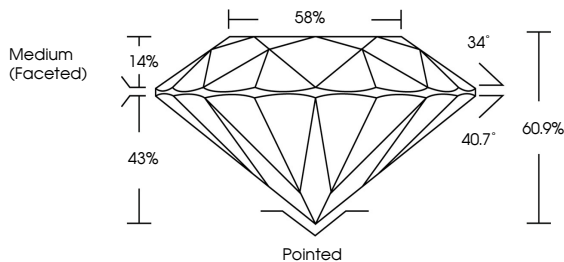
Carat Weight 2.00 CARATS Color Grade FANCY INTENSE PINK Clarity Grade VS 2 Cut Grade IDEAL

ADDITIONAL GRADING INFORMATION

Polish EXCELLENT Symmetry EXCELLENT Fluorescence STRONG Inscription(s) IGI LG770621812

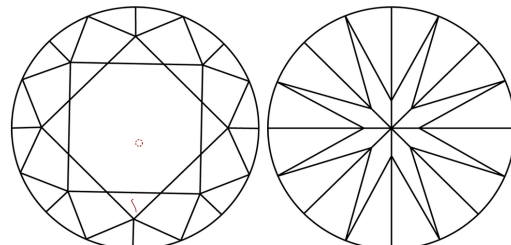
Comments: This Laboratory Grown Diamond was created by Chemical Vapor Deposition (CVD) growth process. Indications of post-growth treatment.

PROPORTIONS



Sample Image Used

CLARITY CHARACTERISTICS



KEY TO SYMBOLS

Red symbols indicate internal characteristics. Green symbols indicate external characteristics.

COLOR

Table with color scale: D, E, F, G, H, I, J, Faint, Very Light, Light

CLARITY

Table with clarity scale: FL, IF, VS 1-2, VS 1-2, SI 1-2, I 1-3, Flawless, Internally Flawless, Very Very Slightly Included, Very Slightly Included, Slightly Included, Included

