



ELECTRONIC COPY

LG770621804
Report verification at igi.org



February 12, 2026
IGI Report Number **LG770621804**
Description **LABORATORY GROWN DIAMOND**
Shape and Cutting Style **CUT CORNERED
RECTANGULAR MODIFIED
BRILLIANT**
Measurements **8.13 X 5.66 X 3.69 MM**
GRADING RESULTS
Carat Weight **1.54 CARAT**
Color Grade **FANCY VIVID PINK**
Clarity Grade **VS 2**

February 12, 2026
IGI Report Number **LG770621804**
Description **LABORATORY GROWN DIAMOND**
Shape and Cutting Style **CUT CORNERED RECTANGULAR
MODIFIED BRILLIANT**
Measurements **8.13 X 5.66 X 3.69 MM**

GRADING RESULTS

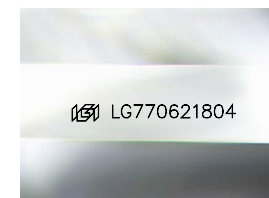
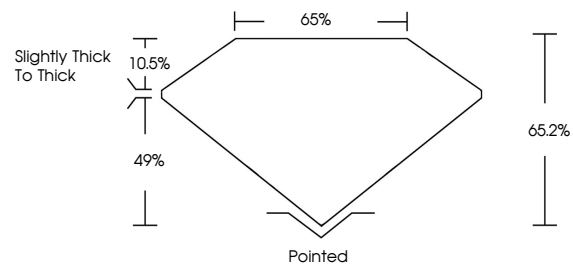
Carat Weight **1.54 CARAT**
Color Grade **FANCY VIVID PINK**
Clarity Grade **VS 2**

ADDITIONAL GRADING INFORMATION

Polish **EXCELLENT**
Symmetry **EXCELLENT**
Fluorescence **SLIGHT**
Inscription(s) **IGI LG770621804**

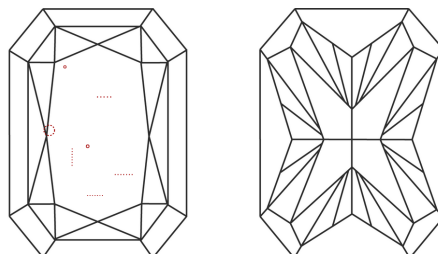
Comments: This Laboratory Grown Diamond was created by Chemical Vapor Deposition (CVD) growth process. Indications of post-growth treatment.

PROPORTIONS



Sample Image Used

CLARITY CHARACTERISTICS



KEY TO SYMBOLS

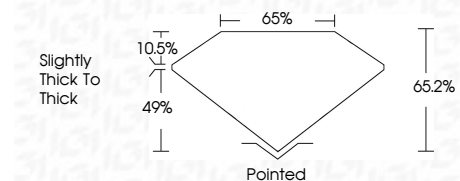
Red symbols indicate internal characteristics.
Green symbols indicate external characteristics.

COLOR

D E F G H I J Faint Very Light Light

CLARITY

FL	IF	VS ¹⁻²	VS ¹⁻²	SI ¹⁻²	I ¹⁻³
Flawless	Internally Flawless	Very Very Slightly Included	Very Slightly Included	Slightly Included	Included



ADDITIONAL GRADING INFORMATION

Polish **EXCELLENT**
Symmetry **EXCELLENT**
Fluorescence **SLIGHT**
Inscription(s) **IGI LG770621804**
Comments: This Laboratory Grown Diamond was created by Chemical Vapor Deposition (CVD) growth process. Indications of post-growth treatment.



February 12, 2026
IGI Report No LG770621804
CUT CORNERED RECT. MODIFIED BRILLIANT
8.13 X 5.66 X 3.69 MM
1.54 CARAT
FANCY VIVID PINK
VS 2
65.2%
65%
Slightly thick to thick
Pointed
EXCELLENT
EXCELLENT
SLIGHT
IGI LG770621804
Comments: This Laboratory Grown Diamond was created by Chemical Vapor Deposition (CVD) growth process. Indications of post-growth treatment.