



ELECTRONIC COPY

LG770621786
Report verification at igi.org



February 12, 2026
IGI Report Number **LG770621786**
Description **LABORATORY GROWN DIAMOND**
Shape and Cutting Style **PEAR MIXED CUT**
Measurements **9.34 X 5.81 X 3.74 MM**
GRADING RESULTS
Carat Weight **1.54 CARAT**
Color Grade **FANCY INTENSE YELLOW**
Clarity Grade **VS 2**

February 12, 2026
IGI Report Number **LG770621786**
Description **LABORATORY GROWN DIAMOND**
Shape and Cutting Style **PEAR MIXED CUT**
Measurements **9.34 X 5.81 X 3.74 MM**

GRADING RESULTS

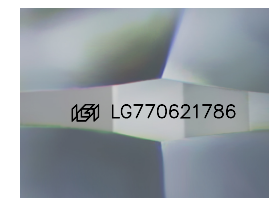
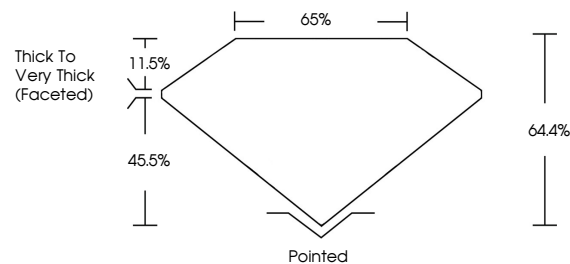
Carat Weight **1.54 CARAT**
Color Grade **FANCY INTENSE YELLOW**
Clarity Grade **VS 2**

ADDITIONAL GRADING INFORMATION

Polish **VERY GOOD**
Symmetry **EXCELLENT**
Fluorescence **NONE**
Inscription(s) **IGI LG770621786**

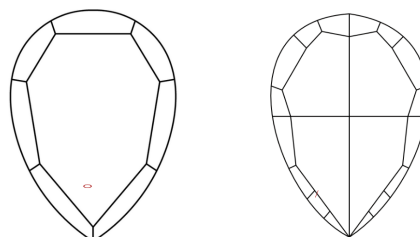
Comments: This Laboratory Grown Diamond was created by Chemical Vapor Deposition (CVD) growth process.

PROPORTIONS



Sample Image Used

CLARITY CHARACTERISTICS



KEY TO SYMBOLS

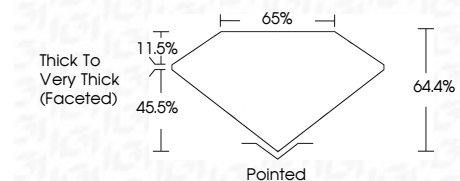
Red symbols indicate internal characteristics.
Green symbols indicate external characteristics.

COLOR

D E F G H I J Faint Very Light Light

CLARITY

| FL | IF | VS ¹⁻² | VS ¹⁻² | SI ¹⁻² | I ¹⁻³ |
|----------|---------------------|-----------------------------|------------------------|-------------------|------------------|
| Flawless | Internally Flawless | Very Very Slightly Included | Very Slightly Included | Slightly Included | Included |



ADDITIONAL GRADING INFORMATION

Polish **VERY GOOD**
Symmetry **EXCELLENT**
Fluorescence **NONE**
Inscription(s) **IGI LG770621786**
Comments: This Laboratory Grown Diamond was created by Chemical Vapor Deposition (CVD) growth process.



February 12, 2026
IGI Report No **LG770621786**
PEAR MIXED CUT
Carat Weight **1.54 CARAT**
Color Grade **FANCY INTENSE YELLOW**
Clarity Grade **VS 2**
Depth **45.5%**
Table **11.5%**
Girdle **64.4%**
Thick to Very Thick (Faceted)
Culet **Pointed**
Polish **VERY GOOD**
Symmetry **EXCELLENT**
Fluorescence **NONE**
Inscription(s) **IGI LG770621786**
Comments: This Laboratory Grown Diamond was created by Chemical Vapor Deposition (CVD) growth process.