



ELECTRONIC COPY

LG770619696
Report verification at igi.org



February 6, 2026
IGI Report Number LG770619696
Description LABORATORY GROWN DIAMOND
Shape and Cutting Style CUT CORNERED RECTANGULAR MODIFIED BRILLIANT
Measurements 9.60 X 7.71 X 4.63 MM
GRADING RESULTS
Carat Weight 3.46 CARATS
Color Grade FANCY BROWN
Clarity Grade SI 2

February 6, 2026
IGI Report Number LG770619696
Description LABORATORY GROWN DIAMOND
Shape and Cutting Style CUT CORNERED RECTANGULAR MODIFIED BRILLIANT
Measurements 9.60 X 7.71 X 4.63 MM

GRADING RESULTS

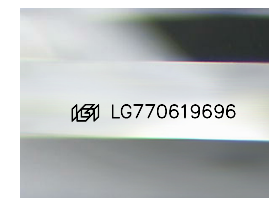
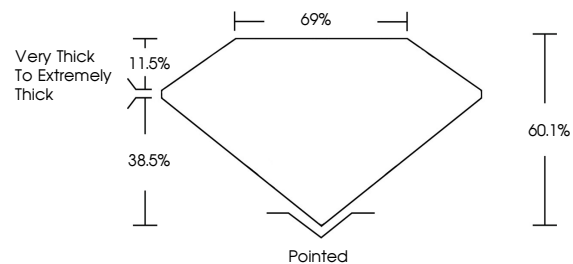
Carat Weight 3.46 CARATS
Color Grade FANCY BROWN
Clarity Grade SI 2

ADDITIONAL GRADING INFORMATION

Polish EXCELLENT
Symmetry EXCELLENT
Fluorescence SLIGHT
Inscription(s) LG770619696

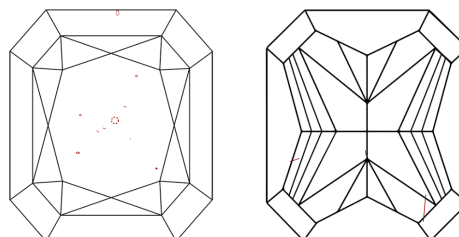
Comments: This Laboratory Grown Diamond was created by Chemical Vapor Deposition (CVD) growth process.
Indications of post-growth treatment.

PROPORTIONS



Sample Image Used

CLARITY CHARACTERISTICS



KEY TO SYMBOLS

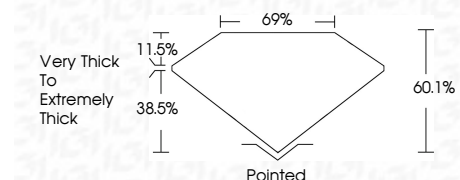
Red symbols indicate internal characteristics.
Green symbols indicate external characteristics.

COLOR

D E F G H I J Faint Very Light Light

CLARITY

FL IF VS 1-2 VS 1-2 SI 1-2 I 1-3
Flawless Internally Flawless Very Very Slightly Included Very Slightly Included Slightly Included Included



ADDITIONAL GRADING INFORMATION

Polish EXCELLENT
Symmetry EXCELLENT
Fluorescence SLIGHT
Inscription(s) LG770619696
Comments: This Laboratory Grown Diamond was created by Chemical Vapor Deposition (CVD) growth process.
Indications of post-growth treatment.



February 6, 2026
IGI Report No LG770619696
CUT CORNERED RECT. MODIFIED BRILLIANT
9.60 X 7.71 X 4.63 MM
3.46 CARATS
FANCY BROWN
SI 2
60.1%
69%
Very Thick to Extremely Thick
Pointed
EXCELLENT
EXCELLENT
SLIGHT
LG770619696
Comments: This Laboratory Grown Diamond was created by Chemical Vapor Deposition (CVD) growth process.
Indications of post-growth treatment.