



ELECTRONIC COPY

LG770619492
Report verification at igi.org



January 29, 2026

IGI Report Number LG770619492

Description LABORATORY GROWN DIAMOND

Shape and Cutting Style ROUND BRILLIANT

Measurements 8.01 - 8.07 X 5.09 MM

GRADING RESULTS

Carat Weight 2.05 CARATS

Color Grade F

Clarity Grade VS 1

Cut Grade EXCELLENT

LABORATORY GROWN DIAMOND REPORT

January 29, 2026

IGI Report Number LG770619492

Description LABORATORY GROWN DIAMOND

Shape and Cutting Style ROUND BRILLIANT

Measurements 8.01 - 8.07 X 5.09 MM

GRADING RESULTS

Carat Weight 2.05 CARATS

Color Grade F

Clarity Grade VS 1

Cut Grade EXCELLENT

ADDITIONAL GRADING INFORMATION

Polish EXCELLENT

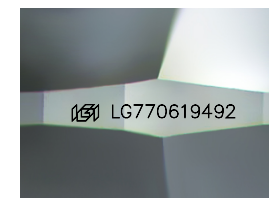
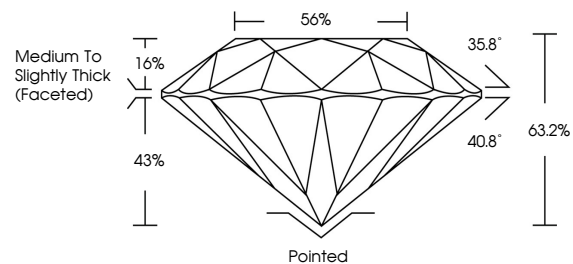
Symmetry EXCELLENT

Fluorescence NONE

Inscription(s) LG770619492

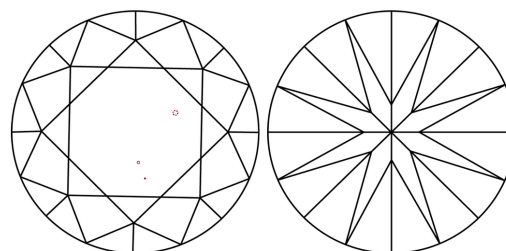
Comments: This Laboratory Grown Diamond was created by Chemical Vapor Deposition (CVD) growth process. Type IIa

PROPORTIONS



Sample Image Used

CLARITY CHARACTERISTICS



KEY TO SYMBOLS

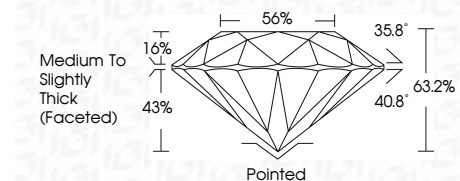
Red symbols indicate internal characteristics. Green symbols indicate external characteristics.

COLOR

D E F G H I J Faint Very Light Light

CLARITY

FL IF VS 1-2 VS 2-3 SI 1-2 I 1-3
Flawless Internally Flawless Very Very Slightly Included Very Slightly Included Slightly Included Included



ADDITIONAL GRADING INFORMATION

Polish EXCELLENT

Symmetry EXCELLENT

Fluorescence NONE

Inscription(s) LG770619492

Comments: This Laboratory Grown Diamond was created by Chemical Vapor Deposition (CVD) growth process. Type IIa



Summary table of diamond characteristics: January 29, 2026, IGI Report No LG770619492, ROUND BRILLIANT, 8.01 - 8.07 X 5.09 MM, 2.05 CARATS, F, VS 1, EXCELLENT, 63.2%, 56%, Medium To Slightly Thick (Faceted), Pointed, EXCELLENT, EXCELLENT, NONE, LG770619492