



ELECTRONIC COPY

LABORATORY GROWN DIAMOND REPORT

January 31, 2026  
IGI Report Number LG770616488  
Description LABORATORY GROWN DIAMOND  
Shape and Cutting Style CUT CORNERED RECTANGULAR MODIFIED BRILLIANT  
Measurements 9.77 X 7.22 X 4.91 MM

GRADING RESULTS

Carat Weight 2.99 CARATS  
Color Grade F  
Clarity Grade VVS 2

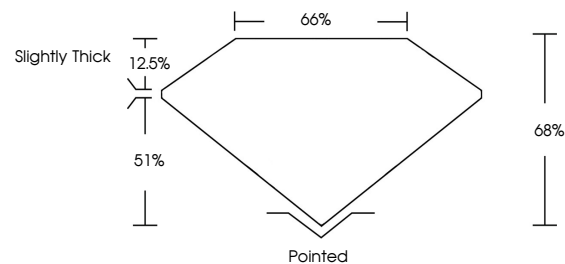
ADDITIONAL GRADING INFORMATION

Polish EXCELLENT  
Symmetry EXCELLENT  
Fluorescence NONE

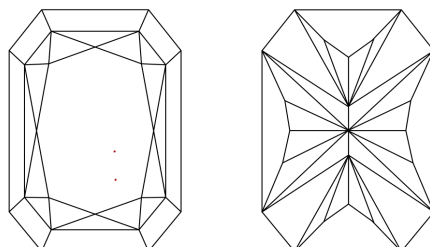
Inscription(s) LG770616488

Comments: This Laboratory Grown Diamond was created by Chemical Vapor Deposition (CVD) growth process.  
Type IIa

PROPORTIONS

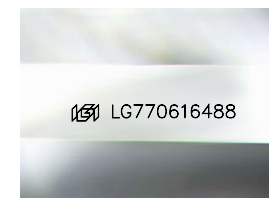


CLARITY CHARACTERISTICS



KEY TO SYMBOLS

Red symbols indicate internal characteristics.  
Green symbols indicate external characteristics.



Sample Image Used

COLOR

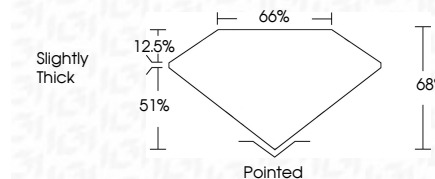
D E F G H I J Faint Very Light Light

CLARITY

FL IF VVS<sup>1-2</sup> VS<sup>1-2</sup> SI<sup>1-2</sup> I<sup>1-3</sup>  
Flawless Internally Flawless Very Very Slightly Included Very Slightly Included Slightly Included Included



January 31, 2026  
IGI Report Number LG770616488  
Description LABORATORY GROWN DIAMOND  
Shape and Cutting Style CUT CORNERED RECTANGULAR MODIFIED BRILLIANT  
Measurements 9.77 X 7.22 X 4.91 MM  
GRADING RESULTS  
Carat Weight 2.99 CARATS  
Color Grade F  
Clarity Grade VVS 2



ADDITIONAL GRADING INFORMATION

Polish EXCELLENT  
Symmetry EXCELLENT  
Fluorescence NONE  
Inscription(s) LG770616488  
Comments: This Laboratory Grown Diamond was created by Chemical Vapor Deposition (CVD) growth process.  
Type IIa



IGI



January 31, 2026  
IGI Report No LG770616488  
CUT CORNERED RECT. MODIFIED BRILLIANT  
9.77 X 7.22 X 4.91 MM  
2.99 CARATS  
F  
VVS 2  
68%  
65%  
Slightly Thick  
Pointed  
EXCELLENT  
EXCELLENT  
NONE  
None  
 LG770616488

Comments: This Laboratory Grown Diamond was created by Chemical Vapor Deposition (CVD) growth process.  
Type IIa