



ELECTRONIC COPY

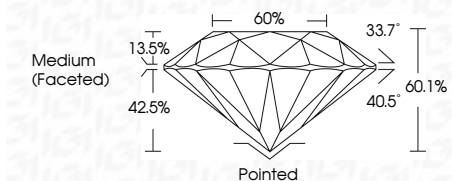
LG770614962
Report verification at igi.org



February 2, 2026
IGI Report Number LG770614962
Description LABORATORY GROWN DIAMOND
Shape and Cutting Style ROUND BRILLIANT
Measurements 7.39 - 7.44 X 4.46 MM

GRADING RESULTS

Carat Weight 1.52 CARAT
Color Grade D
Clarity Grade VS 2
Cut Grade IDEAL



ADDITIONAL GRADING INFORMATION

Polish EXCELLENT
Symmetry EXCELLENT
Fluorescence NONE
Inscription(s) IGI LG770614962
Comments: This Laboratory Grown Diamond was created by Chemical Vapor Deposition (CVD) growth process. Type IIa



February 2, 2026
IGI Report No LG770614962
ROUND BRILLIANT
1.52 CARAT
D
VS 2
IDEAL
60.1%
60%
Medium (Faceted)
Pointed
EXCELLENT
EXCELLENT
NONE
IGI LG770614962
Comments: This Laboratory Grown Diamond was created by Chemical Vapor Deposition (CVD) growth process. Type IIa

February 2, 2026
IGI Report Number LG770614962
Description LABORATORY GROWN DIAMOND
Shape and Cutting Style ROUND BRILLIANT
Measurements 7.39 - 7.44 X 4.46 MM

GRADING RESULTS

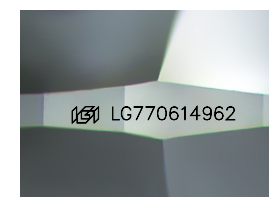
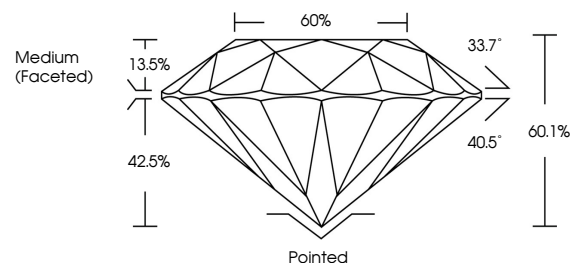
Carat Weight 1.52 CARAT
Color Grade D
Clarity Grade VS 2
Cut Grade IDEAL

ADDITIONAL GRADING INFORMATION

Polish EXCELLENT
Symmetry EXCELLENT
Fluorescence NONE
Inscription(s) IGI LG770614962

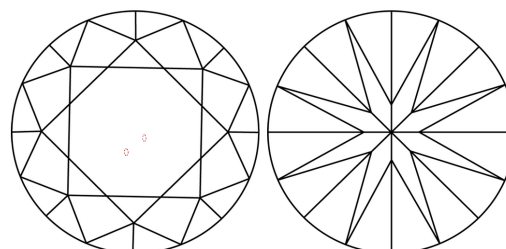
Comments: This Laboratory Grown Diamond was created by Chemical Vapor Deposition (CVD) growth process. Type IIa

PROPORTIONS



Sample Image Used

CLARITY CHARACTERISTICS



KEY TO SYMBOLS

Red symbols indicate internal characteristics.
Green symbols indicate external characteristics.

COLOR

D E F G H I J Faint Very Light Light

CLARITY

FL IF VS 1-2 VS 1-2 SI 1-2 I 1-3
Flawless Internally Flawless Very Very Slightly Included Very Slightly Included Slightly Included Included

