



**ELECTRONIC COPY**

LG770614755  
Report verification at igi.org



February 3, 2026

IGI Report Number **LG770614755**

Description **LABORATORY GROWN DIAMOND**

Shape and Cutting Style **ROUND BRILLIANT**

Measurements **9.30 - 9.34 X 5.56 MM**

**GRADING RESULTS**

Carat Weight **3.00 CARATS**

Color Grade **E**

Clarity Grade **VVS 2**

Cut Grade **VERY GOOD**

February 3, 2026

IGI Report Number **LG770614755**

Description **LABORATORY GROWN DIAMOND**

Shape and Cutting Style **ROUND BRILLIANT**

Measurements **9.30 - 9.34 X 5.56 MM**

**GRADING RESULTS**

Carat Weight **3.00 CARATS**

Color Grade **E**

Clarity Grade **VVS 2**

Cut Grade **VERY GOOD**

**ADDITIONAL GRADING INFORMATION**

Polish **EXCELLENT**

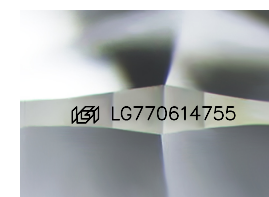
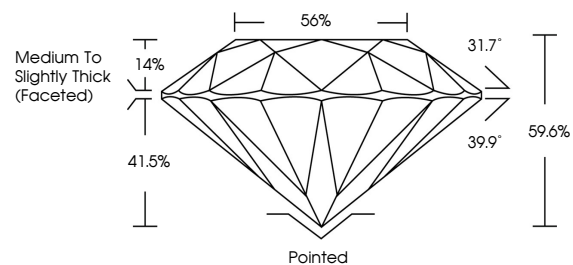
Symmetry **EXCELLENT**

Fluorescence **NONE**

Inscription(s) **IGI LG770614755**

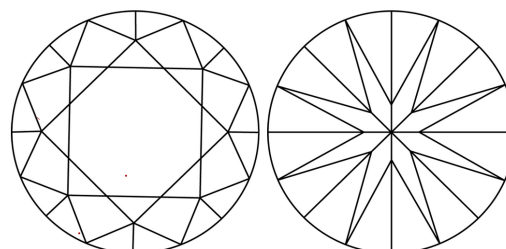
Comments: This Laboratory Grown Diamond was created by Chemical Vapor Deposition (CVD) growth process. Type IIa

**PROPORTIONS**



Sample Image Used

**CLARITY CHARACTERISTICS**



**KEY TO SYMBOLS**

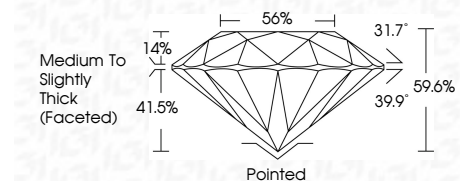
Red symbols indicate internal characteristics.  
Green symbols indicate external characteristics.

**COLOR**

D E F G H I J Faint Very Light Light

**CLARITY**

FL	IF	VVS <sup>1-2</sup>	VS <sup>1-2</sup>	SI <sup>1-2</sup>	I <sup>1-3</sup>
Flawless	Internally Flawless	Very Very Slightly Included	Very Slightly Included	Slightly Included	Included



**ADDITIONAL GRADING INFORMATION**

Polish **EXCELLENT**

Symmetry **EXCELLENT**

Fluorescence **NONE**

Inscription(s) **IGI LG770614755**

Comments: This Laboratory Grown Diamond was created by Chemical Vapor Deposition (CVD) growth process. Type IIa



**IGI**



February 3, 2026  
IGI Report No LG770614755  
ROUND BRILLIANT  
9.30 - 9.34 X 5.56 MM  
3.00 CARATS  
E  
VERY GOOD  
VVS 2  
59.6%  
56%  
Medium To Slightly Thick (Faceted)  
Pointed  
EXCELLENT  
EXCELLENT  
NONE  
IGI LG770614755  
Comments: This Laboratory Grown Diamond was created by Chemical Vapor Deposition (CVD) growth process. Type IIa