



ELECTRONIC COPY

LG770613689
Report verification at igi.org



January 29, 2026
IGI Report Number **LG770613689**
Description **LABORATORY GROWN DIAMOND**
Shape and Cutting Style **CUSHION MODIFIED BRILLIANT**
Measurements **9.50 X 7.25 X 4.96 MM**
GRADING RESULTS
Carat Weight **2.56 CARATS**
Color Grade **D**
Clarity Grade **VVS 2**

LABORATORY GROWN DIAMOND REPORT

January 29, 2026
IGI Report Number **LG770613689**
Description **LABORATORY GROWN DIAMOND**
Shape and Cutting Style **CUSHION MODIFIED BRILLIANT**
Measurements **9.50 X 7.25 X 4.96 MM**

GRADING RESULTS

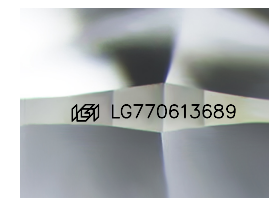
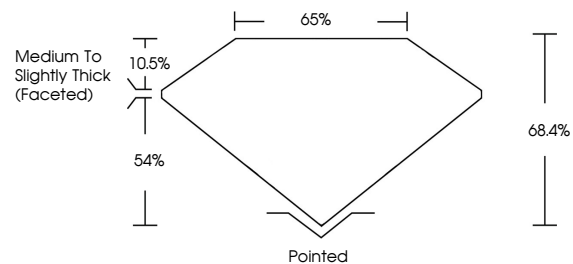
Carat Weight **2.56 CARATS**
Color Grade **D**
Clarity Grade **VVS 2**

ADDITIONAL GRADING INFORMATION

Polish **EXCELLENT**
Symmetry **EXCELLENT**
Fluorescence **NONE**
Inscription(s) **IGI LG770613689**

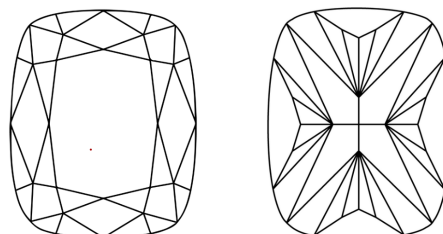
Comments: This Laboratory Grown Diamond was created by Chemical Vapor Deposition (CVD) growth process. Type IIa

PROPORTIONS



Sample Image Used

CLARITY CHARACTERISTICS



KEY TO SYMBOLS

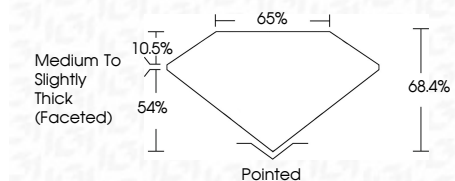
Red symbols indicate internal characteristics.
Green symbols indicate external characteristics.

COLOR

D E F G H I J Faint Very Light Light

CLARITY

FL	IF	VVS ¹⁻²	VS ¹⁻²	SI ¹⁻²	I ¹⁻³
Flawless	Internally Flawless	Very Very Slightly Included	Very Slightly Included	Slightly Included	Included



ADDITIONAL GRADING INFORMATION

Polish **EXCELLENT**
Symmetry **EXCELLENT**
Fluorescence **NONE**
Inscription(s) **IGI LG770613689**
Comments: This Laboratory Grown Diamond was created by Chemical Vapor Deposition (CVD) growth process. Type IIa



January 29, 2026
IGI Report No LG770613689
CUSHION MODIFIED BRILLIANT
9.50 X 7.25 X 4.96 MM
2.56 CARATS
D
VVS 2
68.4%
65%
Medium to Slightly Thick (Faceted)
Pointed
EXCELLENT
EXCELLENT
NONE
IGI LG770613689
Comments: This Laboratory Grown Diamond was created by Chemical Vapor Deposition (CVD) growth process. Type IIa