



ELECTRONIC COPY

LG770613465 Report verification at igi.org

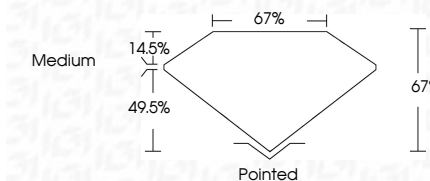


January 28, 2026 IGI Report Number LG770613465 Description LABORATORY GROWN DIAMOND Shape and Cutting Style CUT CORNERED RECTANGULAR MODIFIED BRILLIANT

Measurements 10.97 X 7.40 X 4.96 MM

GRADING RESULTS

Carat Weight 3.50 CARATS Color Grade D Clarity Grade VS 1



ADDITIONAL GRADING INFORMATION

Polish EXCELLENT Symmetry EXCELLENT Fluorescence NONE Inscription(s) LG770613465 Comments: This Laboratory Grown Diamond was created by Chemical Vapor Deposition (CVD) growth process. Type IIa



January 28, 2026 IGI Report Number LG770613465 Description LABORATORY GROWN DIAMOND Shape and Cutting Style CUT CORNERED RECTANGULAR MODIFIED BRILLIANT Measurements 10.97 X 7.40 X 4.96 MM

GRADING RESULTS

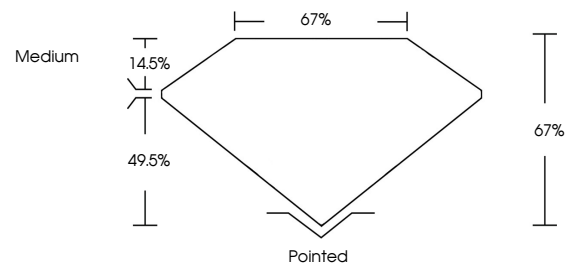
Carat Weight 3.50 CARATS Color Grade D Clarity Grade VS 1

ADDITIONAL GRADING INFORMATION

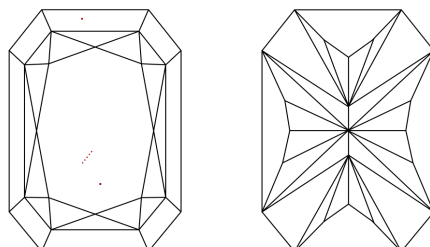
Polish EXCELLENT Symmetry EXCELLENT Fluorescence NONE Inscription(s) LG770613465

Comments: This Laboratory Grown Diamond was created by Chemical Vapor Deposition (CVD) growth process. Type IIa

PROPORTIONS

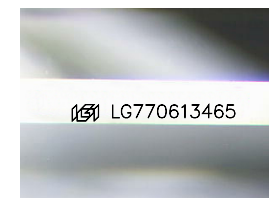


CLARITY CHARACTERISTICS



KEY TO SYMBOLS

Red symbols indicate internal characteristics. Green symbols indicate external characteristics.



Sample Image Used

COLOR

D E F G H I J Faint Very Light Light

CLARITY

FL IF VS 1-2 VS 2-3 SI 1-2 I 1-3 Flawless Internally Flawless Very Very Slightly Included Very Slightly Included Slightly Included Included

January 28, 2026 IGI Report No LG770613465 CUT CORNERED RECT. MODIFIED BRILLIANT 3.50 CARATS D VS 1 67% 67% Medium Pointed EXCELLENT EXCELLENT NONE LG770613465

Comments: This Laboratory Grown Diamond was created by Chemical Vapor Deposition (CVD) growth process. Type IIa