



ELECTRONIC COPY

LG770612176
Report verification at igi.org



January 27, 2026

IGI Report Number **LG770612176**

Description **LABORATORY GROWN DIAMOND**

Shape and Cutting Style **ROUND BRILLIANT**

Measurements **6.51 - 6.60 X 4.00 MM**

GRADING RESULTS

Carat Weight **1.07 CARAT**

Color Grade **E**

Clarity Grade **VS 2**

Cut Grade **VERY GOOD**

January 27, 2026

IGI Report Number **LG770612176**

Description **LABORATORY GROWN DIAMOND**

Shape and Cutting Style **ROUND BRILLIANT**

Measurements **6.51 - 6.60 X 4.00 MM**

GRADING RESULTS

Carat Weight **1.07 CARAT**

Color Grade **E**

Clarity Grade **VS 2**

Cut Grade **VERY GOOD**

ADDITIONAL GRADING INFORMATION

Polish **VERY GOOD**

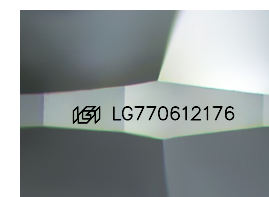
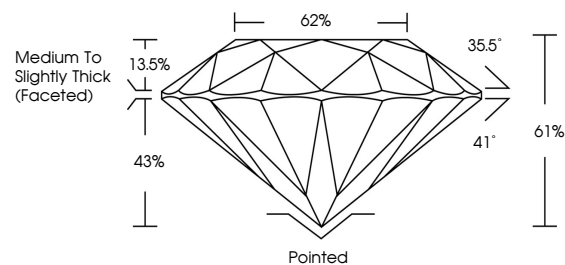
Symmetry **GOOD**

Fluorescence **NONE**

Inscription(s) **IGI LG770612176**

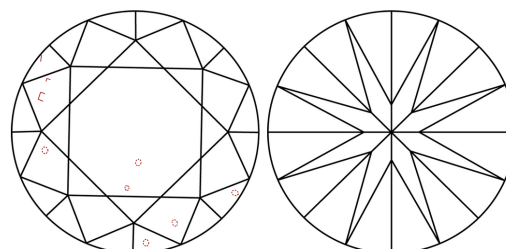
Comments: This Laboratory Grown Diamond was created by Chemical Vapor Deposition (CVD) growth process. Type IIa

PROPORTIONS



Sample Image Used

CLARITY CHARACTERISTICS



KEY TO SYMBOLS

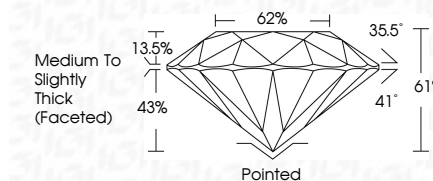
Red symbols indicate internal characteristics.
Green symbols indicate external characteristics.

COLOR

D E F G H I J Faint Very Light Light

CLARITY

FL	IF	VS ¹⁻²	VS ¹⁻²	SI ¹⁻²	I ¹⁻³
Flawless	Internally Flawless	Very Very Slightly Included	Very Slightly Included	Slightly Included	Included



ADDITIONAL GRADING INFORMATION

Polish **VERY GOOD**

Symmetry **GOOD**

Fluorescence **NONE**

Inscription(s) **IGI LG770612176**

Comments: This Laboratory Grown Diamond was created by Chemical Vapor Deposition (CVD) growth process. Type IIa



IGI



January 27, 2026
IGI Report No LG770612176
ROUND BRILLIANT
6.51 - 6.60 X 4.00 MM
Carat Weight 1.07 CARAT
Color Grade E
Clarity Grade VS 2
Cut Grade VERY GOOD
Depth 61%
Table 62%
Girdle Medium To Slightly Thick (Faceted)
Culet Pointed
Polish VERY GOOD
Symmetry GOOD
Fluorescence NONE
Inscription(s) IGI LG770612176
Comments: This Laboratory Grown Diamond was created by Chemical Vapor Deposition (CVD) growth process. Type IIa