



ELECTRONIC COPY

LABORATORY GROWN DIAMOND REPORT

February 1, 2026
 IGI Report Number **LG770611567**
 Description **LABORATORY GROWN DIAMOND**
 Shape and Cutting Style **ROUND BRILLIANT**
 Measurements **7.87 - 7.90 X 4.87 MM**

GRADING RESULTS

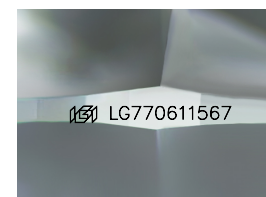
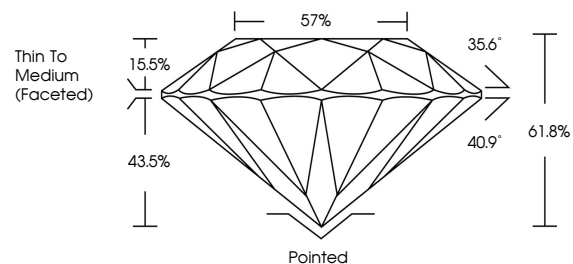
Carat Weight **1.85 CARAT**
 Color Grade **D**
 Clarity Grade **VS 1**
 Cut Grade **IDEAL**

ADDITIONAL GRADING INFORMATION

Polish **EXCELLENT**
 Symmetry **EXCELLENT**
 Fluorescence **NONE**
 Inscription(s) **IGI LG770611567**

Comments: This Laboratory Grown Diamond was created by Chemical Vapor Deposition (CVD) growth process. Type IIa

PROPORTIONS



Sample Image Used

COLOR

D E F G H I J Faint Very Light Light

CLARITY

FL IF VS¹⁻² VS¹⁻² SI¹⁻² I¹⁻³

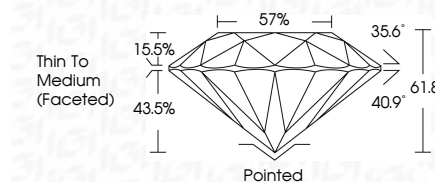
Flawless Internally Flawless Very Very Slightly Included Very Slightly Included Slightly Included Included



February 1, 2026
 IGI Report Number **LG770611567**
 Description **LABORATORY GROWN DIAMOND**
 Shape and Cutting Style **ROUND BRILLIANT**
 Measurements **7.87 - 7.90 X 4.87 MM**

GRADING RESULTS

Carat Weight **1.85 CARAT**
 Color Grade **D**
 Clarity Grade **VS 1**
 Cut Grade **IDEAL**



ADDITIONAL GRADING INFORMATION

Polish **EXCELLENT**
 Symmetry **EXCELLENT**
 Fluorescence **NONE**
 Inscription(s) **IGI LG770611567**

Comments: This Laboratory Grown Diamond was created by Chemical Vapor Deposition (CVD) growth process. Type IIa



February 1, 2026
 IGI Report No LG770611567
ROUND BRILLIANT

7.87 - 7.90 X 4.87 MM
 1.85 CARAT
 D
 VS 1
 IDEAL
 61.8%
 57%
 Thin To Medium (Faceted)

Pointed
 EXCELLENT
 EXCELLENT
 NONE
 IGI LG770611567

Culet
 Polish
 Symmetry
 Fluorescence
 Inscription(s)

Comments: This Laboratory Grown Diamond was created by Chemical Vapor Deposition (CVD) growth process. Type IIa