



ELECTRONIC COPY

LG770611199
Report verification at igi.org



January 31, 2026

IGI Report Number **LG770611199**

Description **LABORATORY GROWN DIAMOND**

Shape and Cutting Style **ROUND BRILLIANT**

Measurements **9.11 - 9.17 X 5.70 MM**

GRADING RESULTS

Carat Weight **2.92 CARATS**

Color Grade **G**

Clarity Grade **VS 1**

Cut Grade **IDEAL**

January 31, 2026

IGI Report Number **LG770611199**

Description **LABORATORY GROWN DIAMOND**

Shape and Cutting Style **ROUND BRILLIANT**

Measurements **9.11 - 9.17 X 5.70 MM**

GRADING RESULTS

Carat Weight **2.92 CARATS**

Color Grade **G**

Clarity Grade **VS 1**

Cut Grade **IDEAL**

ADDITIONAL GRADING INFORMATION

Polish **EXCELLENT**

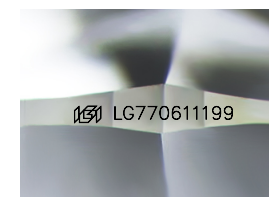
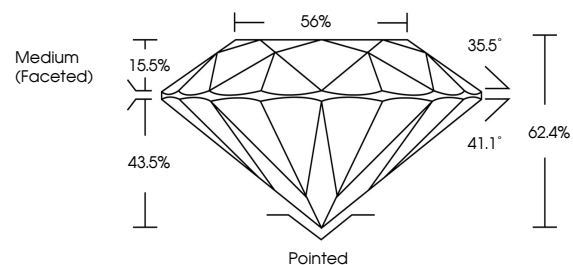
Symmetry **EXCELLENT**

Fluorescence **NONE**

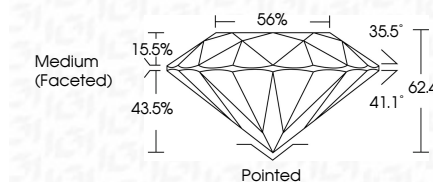
Inscription(s) **LG770611199**

Comments: This Laboratory Grown Diamond was created by Chemical Vapor Deposition (CVD) growth process. Type IIa

PROPORTIONS



Sample Image Used



COLOR

D E F G H I J Faint Very Light Light

CLARITY

FL	IF	VS ¹⁻²	VS ¹⁻²	SI ¹⁻²	I ¹⁻³
Flawless	Internally Flawless	Very Very Slightly Included	Very Slightly Included	Slightly Included	Included

ADDITIONAL GRADING INFORMATION

Polish **EXCELLENT**

Symmetry **EXCELLENT**

Fluorescence **NONE**

Inscription(s) **LG770611199**

Comments: This Laboratory Grown Diamond was created by Chemical Vapor Deposition (CVD) growth process. Type IIa



IGI



January 31, 2026	IGI Report No LG770611199	2.92 CARATS	G	VS 1	IDEAL	62.4%	56%	Medium (Faceted)	Pointed	EXCELLENT	EXCELLENT	NONE	LG770611199
ROUND BRILLIANT	9.11 - 9.17 X 5.70 MM	Carat Weight	Color Grade	Clarity Grade	Cut Grade	Depth	Table	Girdle	Culet	Polish	Symmetry	Fluorescence	Inscription(s)

Comments: This Laboratory Grown Diamond was created by Chemical Vapor Deposition (CVD) growth process. Type IIa