



ELECTRONIC COPY

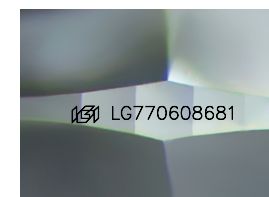
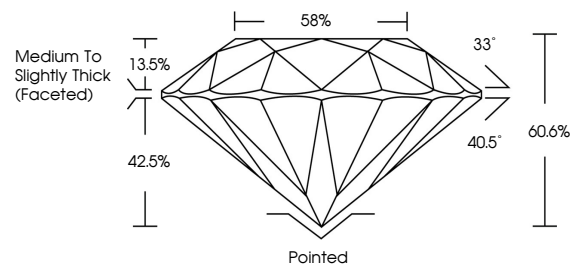
LG770608681
Report verification at igi.org



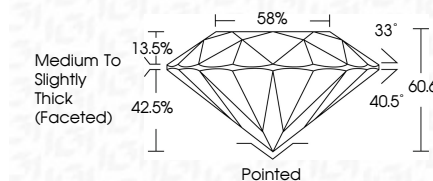
February 3, 2026
IGI Report Number LG770608681
Description LABORATORY GROWN DIAMOND
Shape and Cutting Style ROUND BRILLIANT
Measurements 7.34 - 7.37 X 4.46 MM
GRADING RESULTS
Carat Weight 1.50 CARAT
Color Grade E
Clarity Grade VVS 2
Cut Grade EXCELLENT

February 3, 2026
IGI Report Number LG770608681
Description LABORATORY GROWN DIAMOND
Shape and Cutting Style ROUND BRILLIANT
Measurements 7.34 - 7.37 X 4.46 MM
GRADING RESULTS
Carat Weight 1.50 CARAT
Color Grade E
Clarity Grade VVS 2
Cut Grade EXCELLENT

PROPORTIONS



Sample Image Used



ADDITIONAL GRADING INFORMATION

Polish EXCELLENT
Symmetry EXCELLENT
Fluorescence NONE
Inscription(s) IGI LG770608681

Comments: This Laboratory Grown Diamond was created by Chemical Vapor Deposition (CVD) growth process. Type IIa

COLOR

D E F G H I J Faint Very Light Light

CLARITY

FL IF VS 1-2 VS 1-2 SI 1-2 I 1-3
Flawless Internally Flawless Very Very Slightly Included Very Slightly Included Slightly Included Included

ADDITIONAL GRADING INFORMATION

Polish EXCELLENT
Symmetry EXCELLENT
Fluorescence NONE
Inscription(s) IGI LG770608681
Comments: This Laboratory Grown Diamond was created by Chemical Vapor Deposition (CVD) growth process. Type IIa



IGI

February 3, 2026
IGI Report No LG770608681
ROUND BRILLIANT
7.34 - 7.37 X 4.46 MM
1.50 CARAT
E
VVS 2
EXCELLENT
60.6%
58%
Medium To Slightly Thick (Faceted)
Pointed
EXCELLENT
EXCELLENT
NONE
IGI LG770608681
Comments: This Laboratory Grown Diamond was created by Chemical Vapor Deposition (CVD) growth process. Type IIa