

ELECTRONIC COPY

LABORATORY GROWN DIAMOND REPORT

January 29, 2026	
IGI Report Number	LG770604701
Description	LABORATORY GROWN DIAMOND
Shape and Cutting Style	ROUND BRILLIANT
Measurements	6.77 - 6.82 X 4.21 MM

GRADING RESULTS

Carat Weight	1.20 CARAT
Color Grade	E
Clarity Grade	VS 1
Cut Grade	IDEAL

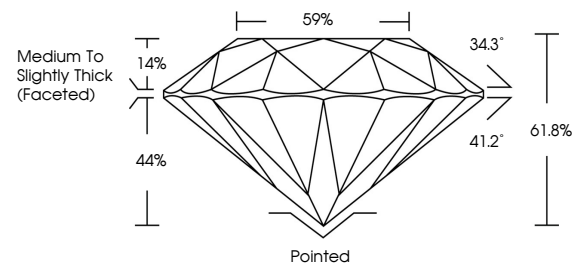
ADDITIONAL GRADING INFORMATION

Polish	EXCELLENT
Symmetry	EXCELLENT
Fluorescence	NONE
Inscription(s)	 LG770604701

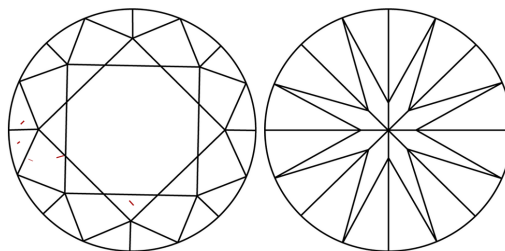
Comments: As Grown - No indication of post-growth treatment.
This Laboratory Grown Diamond was created by High Pressure High Temperature (HPHT) growth process.
Type II

LG770604701
Report verification at igi.org

PROPORTIONS

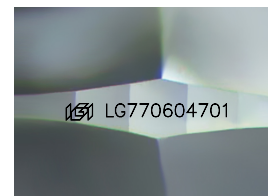


CLARITY CHARACTERISTICS



KEY TO SYMBOLS

Red symbols indicate internal characteristics.
Green symbols indicate external characteristics.



Sample Image Used

COLOR

D E F G H I J Faint Very Light Light

CLARITY

FL	IF	VVS ¹⁻²	VS ¹⁻²	SI ¹⁻²	I ¹⁻³
Flawless	Internally Flawless	Very Very Slightly Included	Very Slightly Included	Slightly Included	Included

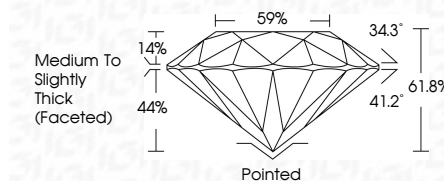
LABORATORY GROWN DIAMOND REPORT



January 29, 2026	
IGI Report Number	LG770604701
Description	LABORATORY GROWN DIAMOND
Shape and Cutting Style	ROUND BRILLIANT
Measurements	6.77 - 6.82 X 4.21 MM

GRADING RESULTS

Carat Weight	1.20 CARAT
Color Grade	E
Clarity Grade	VS 1
Cut Grade	IDEAL



ADDITIONAL GRADING INFORMATION

Polish	EXCELLENT
Symmetry	EXCELLENT
Fluorescence	NONE
Inscription(s)	LG770604701 LG770604701
Comments: As Grown - No indication of post-growth treatment.	
This Laboratory Grown Diamond was created by High Pressure High Temperature (HPHT) growth process.	
Type II	



© IGI 2020, International Gemological Institute

FD - 10 20

January 29, 2026
 LGI Report No LG770604701
 BEYOND BRIGHT

ROUND BRILLIANT	3.77 - 6.82 X 4.21 MM	Carat Weight	1.20 CARAT
		Color Grade	E
		Clarity Grade	VS 1
		Cut Grade	IDEAL
		Depth	61.6%
		Table	59%
		Girdle	Medium To Slightly Thick (Faceted)
		Culet	Pointed
		Polish	EXCELLENT
		Symmetry	EXCELLENT
		Fluorescence	NONE

Comments:
As Grown - No indication of post-growth treatment