



ELECTRONIC COPY

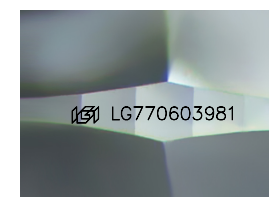
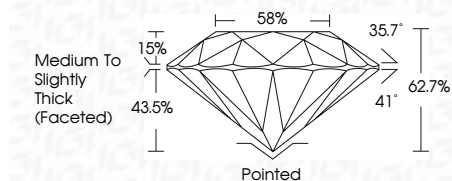
LG770603981
Report verification at igi.org



January 30, 2026
IGI Report Number LG770603981
Description LABORATORY GROWN DIAMOND
Shape and Cutting Style ROUND BRILLIANT
Measurements 8.07 - 8.10 X 5.07 MM

GRADING RESULTS

Carat Weight 2.06 CARATS
Color Grade F
Clarity Grade VVS 2
Cut Grade EXCELLENT



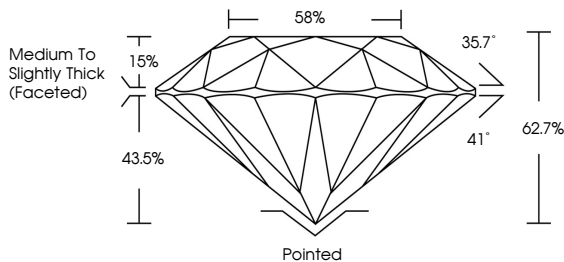
Sample Image Used

ADDITIONAL GRADING INFORMATION

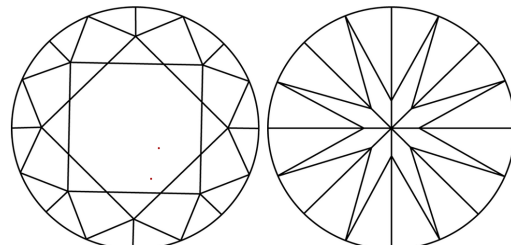
Polish EXCELLENT
Symmetry EXCELLENT
Fluorescence NONE
Inscription(s) IGI LG770603981
Comments: This Laboratory Grown Diamond was created by Chemical Vapor Deposition (CVD) growth process. Type IIa



PROPORTIONS



CLARITY CHARACTERISTICS



KEY TO SYMBOLS

Red symbols indicate internal characteristics.
Green symbols indicate external characteristics.

COLOR

Color scale table with categories D, E, F, G, H, I, J, Faint, Very Light, Light

CLARITY

Clarity scale table with categories FL, IF, VVS 1-2, VS 1-2, SI 1-2, I 1-3



Summary of report details including date, report number, description, measurements, grading results, and additional information.