



ELECTRONIC COPY

LG769672392
Report verification at igi.org



February 2, 2026

IGI Report Number **LG769672392**

Description **LABORATORY GROWN DIAMOND**

Shape and Cutting Style **ROUND BRILLIANT**

Measurements **6.33 - 6.38 X 3.98 MM**

GRADING RESULTS

Carat Weight **1.00 CARAT**

Color Grade **E**

Clarity Grade **VS 2**

Cut Grade **EXCELLENT**

February 2, 2026

IGI Report Number **LG769672392**

Description **LABORATORY GROWN DIAMOND**

Shape and Cutting Style **ROUND BRILLIANT**

Measurements **6.33 - 6.38 X 3.98 MM**

GRADING RESULTS

Carat Weight **1.00 CARAT**

Color Grade **E**

Clarity Grade **VS 2**

Cut Grade **EXCELLENT**

ADDITIONAL GRADING INFORMATION

Polish **EXCELLENT**

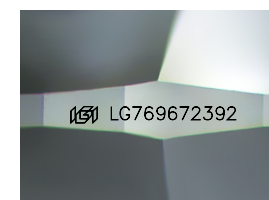
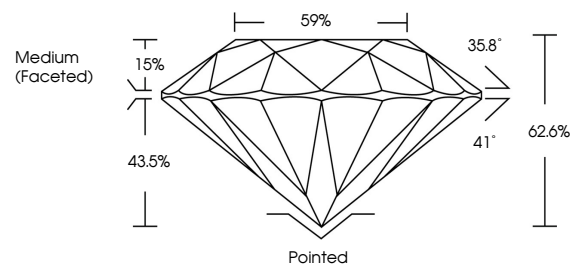
Symmetry **EXCELLENT**

Fluorescence **NONE**

Inscription(s) **LG769672392**

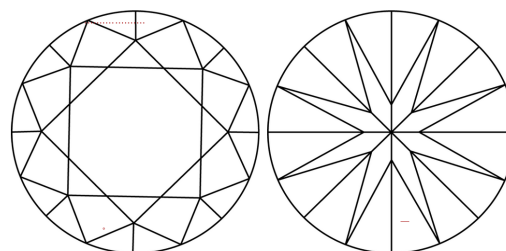
Comments: This Laboratory Grown Diamond was created by Chemical Vapor Deposition (CVD) growth process.
Type IIa

PROPORTIONS



Sample Image Used

CLARITY CHARACTERISTICS



KEY TO SYMBOLS

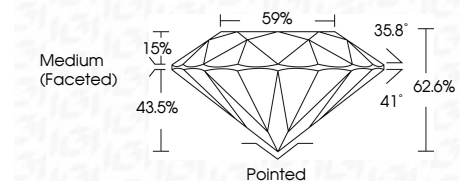
Red symbols indicate internal characteristics.
Green symbols indicate external characteristics.

COLOR

D E F G H I J Faint Very Light Light

CLARITY

FL	IF	VS ¹⁻²	VS ¹⁻²	SI ¹⁻²	I ¹⁻³
Flawless	Internally Flawless	Very Very Slightly Included	Very Slightly Included	Slightly Included	Included



ADDITIONAL GRADING INFORMATION

Polish **EXCELLENT**

Symmetry **EXCELLENT**

Fluorescence **NONE**

Inscription(s) **LG769672392**

Comments: This Laboratory Grown Diamond was created by Chemical Vapor Deposition (CVD) growth process.
Type IIa



IGI



February 2, 2026	IGI Report No LG769672392	1.00 CARAT	E	Pointed
ROUND BRILLIANT	6.33 - 6.38 X 3.98 MM	EXCELLENT	VS 2	EXCELLENT
Carat Weight	Color Grade	Clarity Grade	Depth	Table
1.00 CARAT	E	VS 2	62.6%	59%
Color Grade	Clarity Grade	Cut Grade	Medium (Faceted)	
E	VS 2	EXCELLENT		
Clarity Grade	Depth	Table	Grille	Culet
VS 2	62.6%	59%		Pointed
Cut Grade	Medium (Faceted)			EXCELLENT
EXCELLENT				EXCELLENT
				Symmetry
				EXCELLENT
				Fluorescence
				NONE
				Inscription(s)
				LG769672392
				Comments: This Laboratory Grown Diamond was created by Chemical Vapor Deposition (CVD) growth process. Type IIa