



ELECTRONIC COPY

LG769672284
Report verification at igi.org



February 2, 2026

IGI Report Number **LG769672284**

Description **LABORATORY GROWN DIAMOND**

Shape and Cutting Style **ROUND BRILLIANT**

Measurements **8.13 - 8.16 X 5.05 MM**

GRADING RESULTS

Carat Weight **2.09 CARATS**

Color Grade **E**

Clarity Grade **VVS 2**

Cut Grade **EXCELLENT**

February 2, 2026

IGI Report Number **LG769672284**

Description **LABORATORY GROWN DIAMOND**

Shape and Cutting Style **ROUND BRILLIANT**

Measurements **8.13 - 8.16 X 5.05 MM**

GRADING RESULTS

Carat Weight **2.09 CARATS**

Color Grade **E**

Clarity Grade **VVS 2**

Cut Grade **EXCELLENT**

ADDITIONAL GRADING INFORMATION

Polish **EXCELLENT**

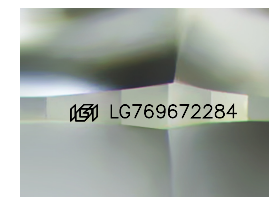
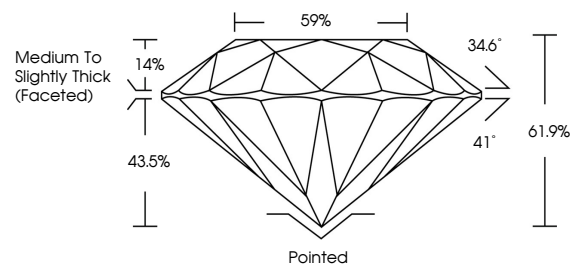
Symmetry **EXCELLENT**

Fluorescence **NONE**

Inscription(s) **IGI LG769672284**

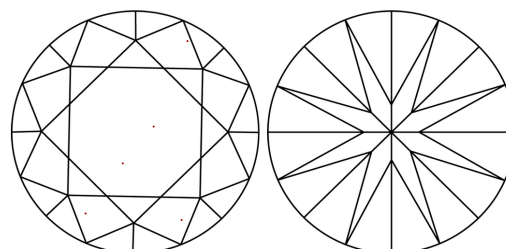
Comments: This Laboratory Grown Diamond was created by Chemical Vapor Deposition (CVD) growth process. Type IIa

PROPORTIONS



Sample Image Used

CLARITY CHARACTERISTICS



KEY TO SYMBOLS

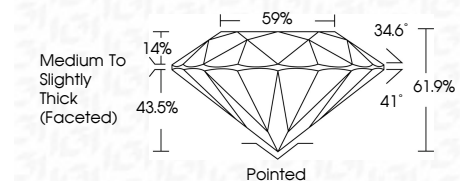
Red symbols indicate internal characteristics.
Green symbols indicate external characteristics.

COLOR

D E F G H I J Faint Very Light Light

CLARITY

| FL | IF | VVS ¹⁻² | VS ¹⁻² | SI ¹⁻² | I ¹⁻³ |
|----------|---------------------|-----------------------------|------------------------|-------------------|------------------|
| Flawless | Internally Flawless | Very Very Slightly Included | Very Slightly Included | Slightly Included | Included |



ADDITIONAL GRADING INFORMATION

Polish **EXCELLENT**

Symmetry **EXCELLENT**

Fluorescence **NONE**

Inscription(s) **IGI LG769672284**

Comments: This Laboratory Grown Diamond was created by Chemical Vapor Deposition (CVD) growth process. Type IIa



IGI



February 2, 2026
IGI Report No LG769672284
ROUND BRILLIANT

8.13 - 8.16 X 5.05 MM

2.09 CARATS
E

Color Grade
VVS 2

Clarity Grade
EXCELLENT

Depth
61.9%

Table
59%

Grade
Medium To Slightly Thick (Faceted)

Culet
Pointed

Polish
EXCELLENT

Symmetry
EXCELLENT

Fluorescence
NONE

Inscription(s)
IGI LG769672284

Comments: This Laboratory Grown Diamond was created by Chemical Vapor Deposition (CVD) growth process. Type IIa