



**LABORATORY GROWN DIAMOND REPORT**

February 4, 2026  
 IGI Report Number **LG769667496**  
 Description **LABORATORY GROWN DIAMOND**  
 Shape and Cutting Style **HEART BRILLIANT**  
 Measurements **6.23 X 6.75 X 3.98 MM**

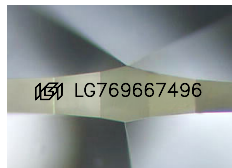
**GRADING RESULTS**

Carat Weight **0.90 CARAT**  
 Color Grade **FANCY VIVID BLUE**  
 Clarity Grade **SI 1**

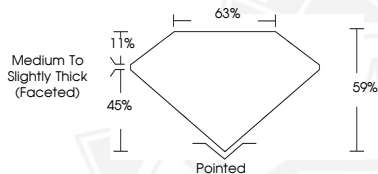
**ADDITIONAL GRADING INFORMATION**

Polish **EXCELLENT**  
 Symmetry **VERY GOOD**  
 Fluorescence **NONE**  
 Inscription(s) **IGI LG769667496**

Comments: This Laboratory Grown Diamond was created by Chemical Vapor Deposition (CVD) growth process. Indications of post-growth treatment.



Sample Image Used



February 4, 2026  
 IGI Report Number **LG769667496**  
**HEART BRILLIANT**  
**LABORATORY GROWN DIAMOND**  
**6.23 X 6.75 X 3.98 MM**  
 Carat Weight **0.90 CARAT**  
 Color Grade **FANCY VIVID BLUE**  
 Clarity Grade **SI 1**  
 Polish **EXCELLENT**  
 Symmetry **VERY GOOD**  
 Fluorescence **NONE**  
 Inscription(s) **IGI LG769667496**

Comments: This Laboratory Grown Diamond was created by Chemical Vapor Deposition (CVD) growth process. Indications of post-growth treatment.



February 4, 2026  
 IGI Report Number **LG769667496**  
**HEART BRILLIANT**  
**LABORATORY GROWN DIAMOND**  
**6.23 X 6.75 X 3.98 MM**  
 Carat Weight **0.90 CARAT**  
 Color Grade **FANCY VIVID BLUE**  
 Clarity Grade **SI 1**  
 Polish **EXCELLENT**  
 Symmetry **VERY GOOD**  
 Fluorescence **NONE**  
 Inscription(s) **IGI LG769667496**

Comments: This Laboratory Grown Diamond was created by Chemical Vapor Deposition (CVD) growth process. Indications of post-growth treatment.



THIS DOCUMENT WAS PRODUCED WITH THE FOLLOWING SECURITY MEASURES: SPECIAL DOCUMENT PAPER, INK SCREENS, WATERMARK, BACKGROUND DESIGNS, HOLOGRAM AND OTHER SECURITY FEATURES NOT LISTED AND DO EXCEED DOCUMENT SECURITY INDUSTRY GUIDELINES.