



February 4, 2026

IGI Report Number LG769667423
MODIFIED OCTAGON STEP CUT
LABORATORY GROWN DIAMOND
7.52 X 4.39 X 2.56 MM

Carat Weight 0.72 CARAT
Color Grade FANCY VIVID GREEN
Clarity Grade VS 2
Polish VERY GOOD
Symmetry EXCELLENT
Fluorescence NONE
Inscription(s) IGI LG769667423

Comments: This Laboratory Grown Diamond was created by Chemical Vapor Deposition (CVD) growth process. Indications of post-growth treatment.

LABORATORY GROWN DIAMOND REPORT

February 4, 2026
IGI Report Number **LG769667423**
Description **LABORATORY GROWN DIAMOND**
Shape and Cutting Style **MODIFIED OCTAGON STEP CUT**
Measurements **7.52 X 4.39 X 2.56 MM**

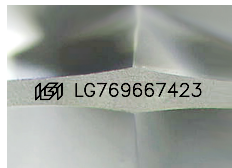
GRADING RESULTS

Carat Weight 0.72 CARAT
Color Grade FANCY VIVID GREEN
Clarity Grade VS 2

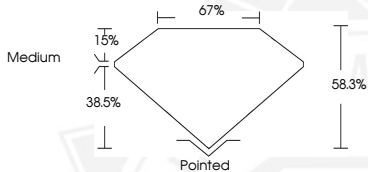
ADDITIONAL GRADING INFORMATION

Polish VERY GOOD
Symmetry EXCELLENT
Fluorescence NONE
Inscription(s) IGI LG769667423

Comments: This Laboratory Grown Diamond was created by Chemical Vapor Deposition (CVD) growth process. Indications of post-growth treatment.



Sample Image Used



February 4, 2026

IGI Report Number LG769667423
MODIFIED OCTAGON STEP CUT
LABORATORY GROWN DIAMOND
7.52 X 4.39 X 2.56 MM

Carat Weight 0.72 CARAT
Color Grade FANCY VIVID GREEN
Clarity Grade VS 2
Polish VERY GOOD
Symmetry EXCELLENT
Fluorescence NONE
Inscription(s) IGI LG769667423

Comments: This Laboratory Grown Diamond was created by Chemical Vapor Deposition (CVD) growth process. Indications of post-growth treatment.

THIS DOCUMENT WAS PRODUCED WITH THE FOLLOWING SECURITY MEASURES: SPECIAL DOCUMENT PAPER, INK SCREENS, WATERMARK, BACKGROUND DESIGNS, HOLOGRAM AND OTHER SECURITY FEATURES NOT LISTED AND DO EXCEED DOCUMENT SECURITY INDUSTRY GUIDELINES.

For terms & conditions and to verify this report, please visit www.igi.org