



**LABORATORY GROWN DIAMOND REPORT**

February 5, 2026  
 IGI Report Number **LG769667422**  
 Description **LABORATORY GROWN DIAMOND**  
 Shape and Cutting Style **HEART BRILLIANT**  
 Measurements **6.18 X 6.60 X 3.89 MM**

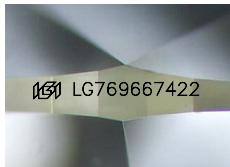
**GRADING RESULTS**

Carat Weight **0.90 CARAT**  
 Color Grade **FANCY INTENSE PINK**  
 Clarity Grade **SI 2**

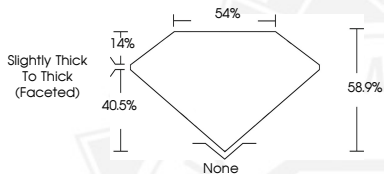
**ADDITIONAL GRADING INFORMATION**

Polish **EXCELLENT**  
 Symmetry **EXCELLENT**  
 Fluorescence **SLIGHT**  
 Inscription(s) **IGI LG769667422**

Comments: This Laboratory Grown Diamond was created by Chemical Vapor Deposition (CVD) growth process. Indications of post-growth treatment.



Sample Image Used



February 5, 2026  
 IGI Report Number **LG769667422**  
**HEART BRILLIANT**  
**LABORATORY GROWN DIAMOND**  
**6.18 X 6.60 X 3.89 MM**  
 Carat Weight **0.90 CARAT**  
 Color Grade **FANCY INTENSE PINK**  
 Clarity Grade **SI 2**  
 Polish **EXCELLENT**  
 Symmetry **EXCELLENT**  
 Fluorescence **SLIGHT**  
 Inscription(s) **IGI LG769667422**

Comments: This Laboratory Grown Diamond was created by Chemical Vapor Deposition (CVD) growth process. Indications of post-growth treatment.



February 5, 2026  
 IGI Report Number **LG769667422**  
**HEART BRILLIANT**  
**LABORATORY GROWN DIAMOND**  
**6.18 X 6.60 X 3.89 MM**  
 Carat Weight **0.90 CARAT**  
 Color Grade **FANCY INTENSE PINK**  
 Clarity Grade **SI 2**  
 Polish **EXCELLENT**  
 Symmetry **EXCELLENT**  
 Fluorescence **SLIGHT**  
 Inscription(s) **IGI LG769667422**

Comments: This Laboratory Grown Diamond was created by Chemical Vapor Deposition (CVD) growth process. Indications of post-growth treatment.

THIS DOCUMENT WAS PRODUCED WITH THE FOLLOWING SECURITY MEASURES: SPECIAL DOCUMENT PAPER, INK SCREENS, WATERMARK, BACKGROUND DESIGNS, HOLOGRAM AND OTHER SECURITY FEATURES NOT LISTED AND DO EXCEED DOCUMENT SECURITY INDUSTRY GUIDELINES.