



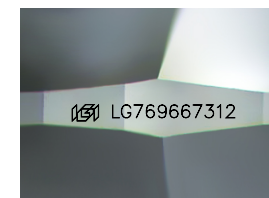
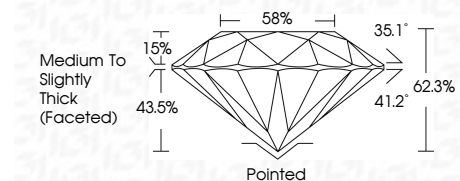
ELECTRONIC COPY

LG769667312
Report verification at igi.org



February 2, 2026
IGI Report Number LG769667312
Description LABORATORY GROWN DIAMOND
Shape and Cutting Style ROUND BRILLIANT
Measurements 9.24 - 9.26 X 5.76 MM

GRADING RESULTS
Carat Weight 3.04 CARATS
Color Grade E
Clarity Grade VVS 2
Cut Grade IDEAL



Sample Image Used

ADDITIONAL GRADING INFORMATION
Polish EXCELLENT
Symmetry EXCELLENT
Fluorescence NONE
Inscription(s) IGI LG769667312
Comments: This Laboratory Grown Diamond was created by Chemical Vapor Deposition (CVD) growth process. Type IIa



February 2, 2026
IGI Report No LG769667312
ROUND BRILLIANT
3.04 CARATS E
9.24 - 9.26 X 5.76 MM
Carat Weight
Color Grade VVS 2
Clarity Grade IDEAL
Cut Grade IDEAL
Depth 62.3%
Table 58%
Medium To Slightly Thick (Faceted)
Girdle
Pointed
Polish EXCELLENT
Symmetry EXCELLENT
Fluorescence NONE
Inscriptions(s) IGI LG769667312
Comments: This Laboratory Grown Diamond was created by Chemical Vapor Deposition (CVD) growth process. Type IIa

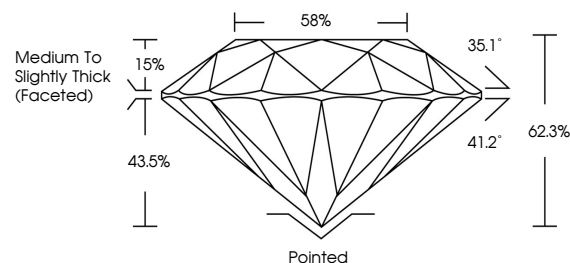
February 2, 2026
IGI Report Number LG769667312
Description LABORATORY GROWN DIAMOND
Shape and Cutting Style ROUND BRILLIANT
Measurements 9.24 - 9.26 X 5.76 MM

GRADING RESULTS
Carat Weight 3.04 CARATS
Color Grade E
Clarity Grade VVS 2
Cut Grade IDEAL

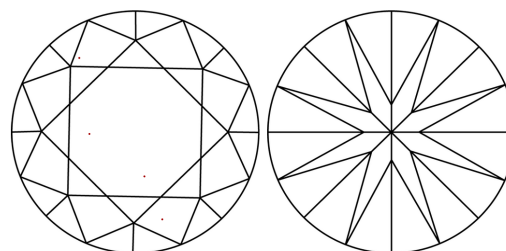
ADDITIONAL GRADING INFORMATION
Polish EXCELLENT
Symmetry EXCELLENT
Fluorescence NONE
Inscription(s) IGI LG769667312

Comments: This Laboratory Grown Diamond was created by Chemical Vapor Deposition (CVD) growth process. Type IIa

PROPORTIONS



CLARITY CHARACTERISTICS



KEY TO SYMBOLS

Red symbols indicate internal characteristics.
Green symbols indicate external characteristics.

COLOR

D E F G H I J Faint Very Light Light

CLARITY

FL IF VVS 1-2 VS 1-2 SI 1-2 I 1-3
Flawless Internally Flawless Very Very Slightly Included Very Slightly Included Slightly Included Included

