



ELECTRONIC COPY

LG769665436
Report verification at igi.org



February 16, 2026
IGI Report Number **LG769665436**
Description **LABORATORY GROWN DIAMOND**
Shape and Cutting Style **CUT CORNERED
RECTANGULAR MODIFIED
BRILLIANT**
Measurements **14.64 X 9.91 X 6.93 MM**
GRADING RESULTS
Carat Weight **10.02 CARATS**
Color Grade **FANCY VIVID RED**
Clarity Grade **VS 1**

February 16, 2026
IGI Report Number **LG769665436**
Description **LABORATORY GROWN DIAMOND**
Shape and Cutting Style **CUT CORNERED RECTANGULAR
MODIFIED BRILLIANT**
Measurements **14.64 X 9.91 X 6.93 MM**

GRADING RESULTS

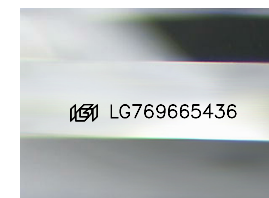
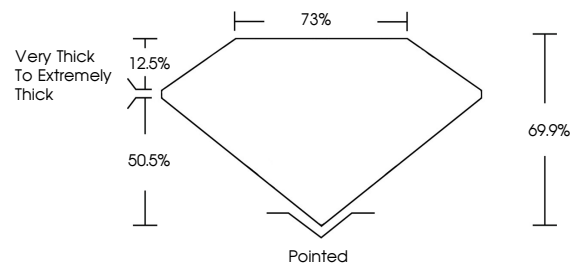
Carat Weight **10.02 CARATS**
Color Grade **FANCY VIVID RED**
Clarity Grade **VS 1**

ADDITIONAL GRADING INFORMATION

Polish **EXCELLENT**
Symmetry **EXCELLENT**
Fluorescence **SLIGHT**
Inscription(s) **IGI LG769665436**

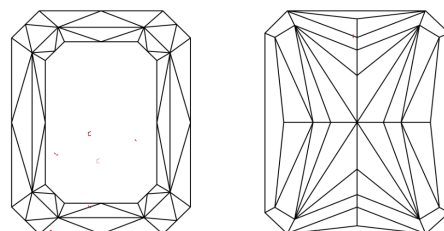
Comments: This Laboratory Grown Diamond was created by Chemical Vapor Deposition (CVD) growth process. Indications of post-growth treatment.

PROPORTIONS



Sample Image Used

CLARITY CHARACTERISTICS



KEY TO SYMBOLS

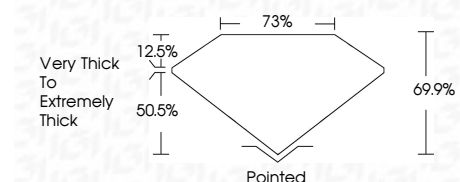
Red symbols indicate internal characteristics.
Green symbols indicate external characteristics.

COLOR

D E F G H I J Faint Very Light Light

CLARITY

FL	IF	VS ¹⁻²	VS ¹⁻²	SI ¹⁻²	I ¹⁻³
Flawless	Internally Flawless	Very Very Slightly Included	Very Slightly Included	Slightly Included	Included



ADDITIONAL GRADING INFORMATION

Polish **EXCELLENT**
Symmetry **EXCELLENT**
Fluorescence **SLIGHT**
Inscription(s) **IGI LG769665436**
Comments: This Laboratory Grown Diamond was created by Chemical Vapor Deposition (CVD) growth process. Indications of post-growth treatment.



February 16, 2026
IGI Report No **LG769665436**
CUT CORNERED RECT. MODIFIED BRILLIANT
14.64 X 9.91 X 6.93 MM
Carat Weight **10.02 CARATS**
Color Grade **FANCY VIVID RED**
Clarity Grade **VS 1**
Depth **69.9%**
Table **73%**
Girdle **Very Thick to Extremely Thick**
Culet **Pointed**
Polish **EXCELLENT**
Symmetry **EXCELLENT**
Fluorescence **SLIGHT**
Inscription(s) **IGI LG769665436**

Comments: This Laboratory Grown Diamond was created by Chemical Vapor Deposition (CVD) growth process. Indications of post-growth treatment.