



LABORATORY GROWN DIAMOND REPORT

February 9, 2026
 IGI Report Number **LG769664621**
 Description **LABORATORY GROWN DIAMOND**
 Shape and Cutting Style **EMERALD CUT**
 Measurements **5.49 X 4.00 X 2.56 MM**

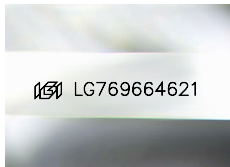
GRADING RESULTS

Carat Weight **0.54 CARAT**
 Color Grade **LIGHT YELLOW**
 Clarity Grade **VVS 2**

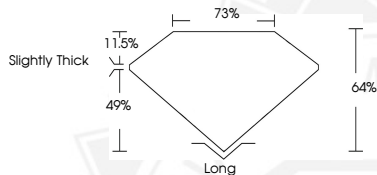
ADDITIONAL GRADING INFORMATION

Polish **VERY GOOD**
 Symmetry **VERY GOOD**
 Fluorescence **NONE**
 Inscription(s) **IGI LG769664621**

Comments: This Laboratory Grown Diamond was created by Chemical Vapor Deposition (CVD) growth process.



Sample Image Used



February 9, 2026
 IGI Report Number **LG769664621**
EMERALD CUT
LABORATORY GROWN DIAMOND
5.49 X 4.00 X 2.56 MM
 Carat Weight **0.54 CARAT**
 Color Grade **LIGHT YELLOW**
 Clarity Grade **VVS 2**
 Polish **VERY GOOD**
 Symmetry **VERY GOOD**
 Fluorescence **NONE**
 Inscription(s) **IGI LG769664621**

Comments: This Laboratory Grown Diamond was created by Chemical Vapor Deposition (CVD) growth process.



February 9, 2026
 IGI Report Number **LG769664621**
EMERALD CUT
LABORATORY GROWN DIAMOND
5.49 X 4.00 X 2.56 MM
 Carat Weight **0.54 CARAT**
 Color Grade **LIGHT YELLOW**
 Clarity Grade **VVS 2**
 Polish **VERY GOOD**
 Symmetry **VERY GOOD**
 Fluorescence **NONE**
 Inscription(s) **IGI LG769664621**

Comments: This Laboratory Grown Diamond was created by Chemical Vapor Deposition (CVD) growth process.



THIS DOCUMENT WAS PRODUCED WITH THE FOLLOWING SECURITY MEASURES: SPECIAL DOCUMENT PAPER, INK SCREENS, WATERMARK, BACKGROUND DESIGNS, HOLOGRAM AND OTHER SECURITY FEATURES NOT LISTED AND DO EXCEED DOCUMENT SECURITY INDUSTRY GUIDELINES.