



January 28, 2026

IGI Report Number **LG769663161**

**ROUND BRILLIANT  
LABORATORY GROWN DIAMOND  
4.23 - 4.27 X 2.59 MM**

Carat Weight **0.29 CARAT**  
Color Grade **D**  
Clarity Grade **SI 1**  
Cut Grade **IDEAL**  
Polish **EXCELLENT**  
Symmetry **EXCELLENT**  
Fluorescence **NONE**  
Inscription(s) **IGI LG769663161**

Comments: This Laboratory Grown Diamond was created by Chemical Vapor Deposition (CVD) growth process. Type IIa

**LABORATORY GROWN DIAMOND REPORT**

January 28, 2026

IGI Report Number

**LG769663161**

Description

**LABORATORY GROWN DIAMOND**

Shape and Cutting Style

**ROUND BRILLIANT**

Measurements

**4.23 - 4.27 X 2.59 MM**

**GRADING RESULTS**

Carat Weight

**0.29 CARAT**

Color Grade

**D**

Clarity Grade

**SI 1**

Cut Grade

**IDEAL**

**ADDITIONAL GRADING INFORMATION**

Polish

**EXCELLENT**

Symmetry

**EXCELLENT**

Fluorescence

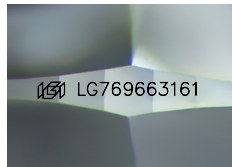
**NONE**

Inscription(s)

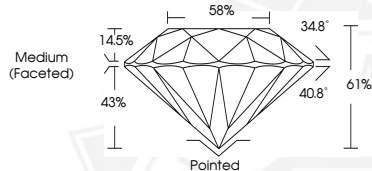
**IGI LG769663161**

Comments: This Laboratory Grown Diamond was created by Chemical Vapor Deposition (CVD) growth process.

Type IIa



Sample Image Used



January 28, 2026

IGI Report Number **LG769663161**

**ROUND BRILLIANT  
LABORATORY GROWN DIAMOND  
4.23 - 4.27 X 2.59 MM**

Carat Weight **0.29 CARAT**  
Color Grade **D**  
Clarity Grade **SI 1**  
Cut Grade **IDEAL**  
Polish **EXCELLENT**  
Symmetry **EXCELLENT**  
Fluorescence **NONE**  
Inscription(s) **IGI LG769663161**

Comments: This Laboratory Grown Diamond was created by Chemical Vapor Deposition (CVD) growth process. Type IIa



THIS DOCUMENT WAS PRODUCED WITH THE FOLLOWING SECURITY MEASURES: SPECIAL DOCUMENT PAPER, INK SCREENS, WATERMARK, BACKGROUND DESIGNS, HOLOGRAM AND OTHER SECURITY FEATURES NOT LISTED AND DO EXCEED DOCUMENT SECURITY INDUSTRY GUIDELINES.