



January 31, 2026

IGI Report Number **LG769657127**

**OVAL BRILLIANT
LABORATORY GROWN DIAMOND
8.27 X 5.48 X 3.31 MM**

Carat Weight	0.95 CARAT
Color Grade	E
Clarity Grade	VVS 2
Polish	VERY GOOD
Symmetry	VERY GOOD
Fluorescence	NONE
Inscription(s)	IGI LG769657127

Comments: This Laboratory Grown Diamond was created by Chemical Vapor Deposition (CVD) growth process. Type IIa

LABORATORY GROWN DIAMOND REPORT

January 31, 2026
IGI Report Number **LG769657127**
Description **LABORATORY GROWN DIAMOND**
Shape and Cutting Style **OVAL BRILLIANT**
Measurements **8.27 X 5.48 X 3.31 MM**

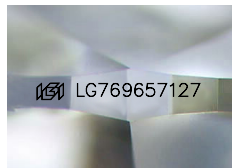
GRADING RESULTS

Carat Weight **0.95 CARAT**
Color Grade **E**
Clarity Grade **VVS 2**

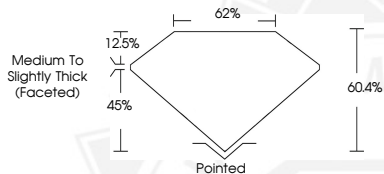
ADDITIONAL GRADING INFORMATION

Polish **VERY GOOD**
Symmetry **VERY GOOD**
Fluorescence **NONE**
Inscription(s) **IGI LG769657127**

Comments: This Laboratory Grown Diamond was created by Chemical Vapor Deposition (CVD) growth process. Type IIa



Sample Image Used



January 31, 2026

IGI Report Number **LG769657127**

**OVAL BRILLIANT
LABORATORY GROWN DIAMOND
8.27 X 5.48 X 3.31 MM**

Carat Weight	0.95 CARAT
Color Grade	E
Clarity Grade	VVS 2
Polish	VERY GOOD
Symmetry	VERY GOOD
Fluorescence	NONE
Inscription(s)	IGI LG769657127

Comments: This Laboratory Grown Diamond was created by Chemical Vapor Deposition (CVD) growth process. Type IIa



THIS DOCUMENT WAS PRODUCED WITH THE FOLLOWING SECURITY MEASURES: SPECIAL DOCUMENT PAPER, INK SCREENS, WATERMARK, BACKGROUND DESIGNS, HOLOGRAM AND OTHER SECURITY FEATURES NOT LISTED AND DO EXCEED DOCUMENT SECURITY INDUSTRY GUIDELINES.