



**ELECTRONIC COPY**

LG769654827  
Report verification at igi.org



January 29, 2026

IGI Report Number **LG769654827**

Description **LABORATORY GROWN DIAMOND**

Shape and Cutting Style **CUT CORNERED  
RECTANGULAR MODIFIED  
BRILLIANT**

Measurements **7.66 X 5.80 X 4.02 MM**

**GRADING RESULTS**

Carat Weight **1.53 CARAT**

Color Grade **F**

Clarity Grade **VVS 1**

January 29, 2026  
IGI Report Number **LG769654827**  
Description **LABORATORY GROWN DIAMOND**  
Shape and Cutting Style **CUT CORNERED RECTANGULAR  
MODIFIED BRILLIANT**  
Measurements **7.66 X 5.80 X 4.02 MM**

**GRADING RESULTS**

Carat Weight **1.53 CARAT**

Color Grade **F**

Clarity Grade **VVS 1**

**ADDITIONAL GRADING INFORMATION**

Polish **EXCELLENT**

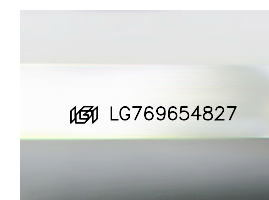
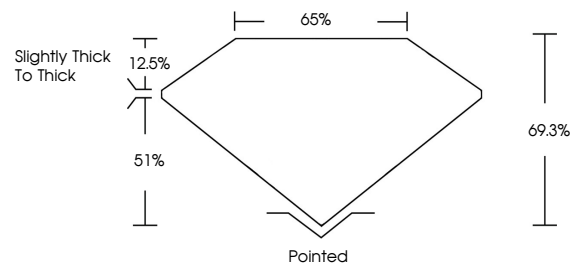
Symmetry **EXCELLENT**

Fluorescence **NONE**

Inscription(s) **IGI LG769654827**

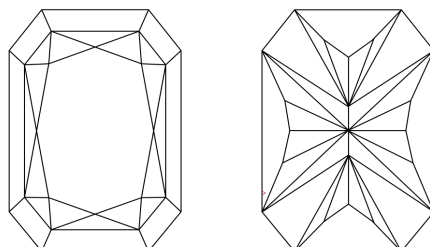
Comments: This Laboratory Grown Diamond was created by Chemical Vapor Deposition (CVD) growth process.  
Type IIa

**PROPORTIONS**



Sample Image Used

**CLARITY CHARACTERISTICS**



**KEY TO SYMBOLS**

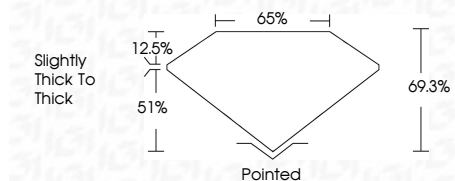
Red symbols indicate internal characteristics.  
Green symbols indicate external characteristics.

**COLOR**

D E F G H I J Faint Very Light Light

**CLARITY**

FL	IF	VVS <sup>1-2</sup>	VS <sup>1-2</sup>	SI <sup>1-2</sup>	I <sup>1-3</sup>
Flawless	Internally Flawless	Very Very Slightly Included	Very Slightly Included	Slightly Included	Included



**ADDITIONAL GRADING INFORMATION**

Polish **EXCELLENT**

Symmetry **EXCELLENT**

Fluorescence **NONE**

Inscription(s) **IGI LG769654827**

Comments: This Laboratory Grown Diamond was created by Chemical Vapor Deposition (CVD) growth process.  
Type IIa



**IGI**



January 29, 2026  
IGI Report No LG769654827  
CUT CORNERED RECT. MODIFIED BRILLIANT  
7.66 X 5.80 X 4.02 MM  
Carat Weight 1.53 CARAT  
Color Grade F  
Clarity Grade VVS 1  
Depth 69.3%  
Table 65%  
Girdle Slightly Thick To Thick  
Culet Pointed  
Polish EXCELLENT  
Symmetry EXCELLENT  
Fluorescence NONE  
Inscription(s) IGI LG769654827  
Comments: This Laboratory Grown Diamond was created by Chemical Vapor Deposition (CVD) growth process.  
Type IIa