



ELECTRONIC COPY

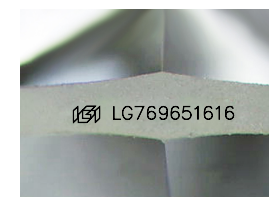
LG769651616
Report verification at igi.org



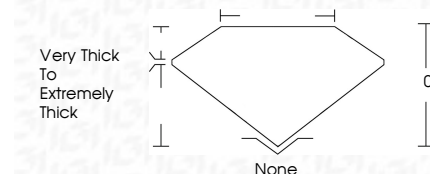
February 25, 2026
IGI Report Number **LG769651616**
Description **LABORATORY GROWN DIAMOND**
Shape and Cutting Style **STAR**
Measurements **7.26 X 6.68 X 3.82 MM**

GRADING RESULTS

Carat Weight **1.01 CARAT**
Color Grade **U-V**
Clarity Grade **VS 1**



Sample Image Used



ADDITIONAL GRADING INFORMATION

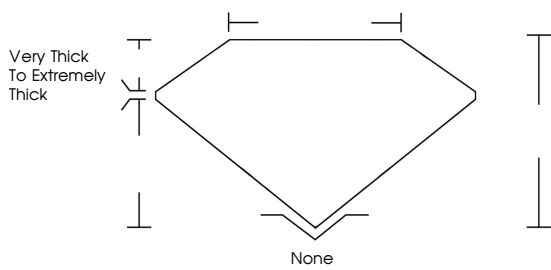
Polish **VERY GOOD**
Symmetry **FAIR**
Fluorescence **NONE**
Inscription(s) **IGI LG769651616**
Comments: This Laboratory Grown Diamond was created by Chemical Vapor Deposition (CVD) growth process. Type IIa



February 25, 2026
IGI Report No LG769651616
STAR
1.01 CARAT
U-V
7.26 X 6.68 X 3.82 MM
Carat Weight
U-V
Color Grade
VS 1
Clarity Grade
0%
Depth
0%
Table
Very Thick to Extremely Thick
Girdle
None
Culet
None
Polish
VERY GOOD
Symmetry
FAIR
Fluorescence
NONE
Inscription(s)
IGI LG769651616
Comments: This Laboratory Grown Diamond was created by Chemical Vapor Deposition (CVD) growth process. Type IIa

February 25, 2026
IGI Report Number **LG769651616**
Description **LABORATORY GROWN DIAMOND**
Shape and Cutting Style **STAR**
Measurements **7.26 X 6.68 X 3.82 MM**
GRADING RESULTS
Carat Weight **1.01 CARAT**
Color Grade **U-V**
Clarity Grade **VS 1**

PROPORTIONS



COLOR

D E F G H I J Faint Very Light Light

CLARITY

FL	IF	VS ¹⁻²	VS ¹⁻²	SI ¹⁻²	I ¹⁻³
Flawless	Internally Flawless	Very Very Slightly Included	Very Slightly Included	Slightly Included	Included

