



Light Performance Grade: Exceptional



January 24, 2026 IGI Report Number LG769649033 Description LABORATORY GROWN DIAMOND Shape and Cutting Style ROUND BRILLIANT Measurements 7.31 - 7.36 X 4.62 MM GRADING RESULTS Carat Weight 1.56 CARAT Color Grade E Clarity Grade VVS 2 Cut Grade EXCELLENT

ELECTRONIC COPY LABORATORY GROWN DIAMOND REPORT

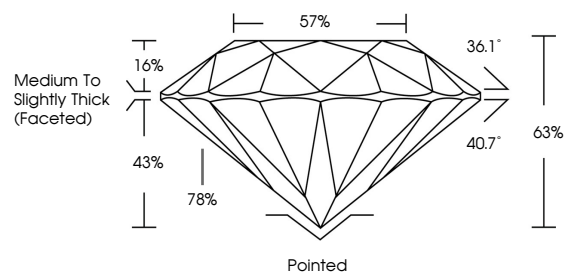
January 24, 2026 IGI Report Number LG769649033 Description LABORATORY GROWN DIAMOND Shape and Cutting Style ROUND BRILLIANT Measurements 7.31 - 7.36 x 4.62 mm

GRADING RESULTS Carat Weight 1.56 CARAT Color Grade E Clarity Grade VVS 2 Cut Grade EXCELLENT

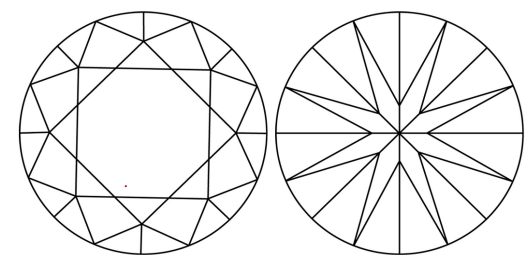
ADDITIONAL GRADING INFORMATION Polish EXCELLENT Symmetry EXCELLENT Fluorescence NONE Inscription(s) IGI LG769649033

Comments: This Laboratory Grown Diamond was created by Chemical Vapor Deposition (CVD) growth process. Type IIa

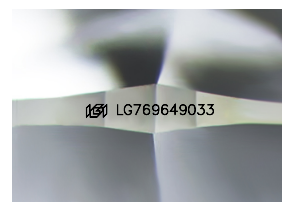
PROPORTIONS



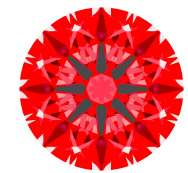
CLARITY CHARACTERISTICS



KEY TO SYMBOLS Red symbols indicate internal characteristics. Green symbols indicate external characteristics.



Sample Image Used



Structured Light Environment Representation

Moderate High Superior Exceptional

Light Performance

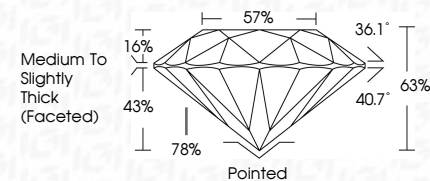


COLOR

D E F G H I J Faint Very Light Light

CLARITY

Table with columns: FL, IF, VS 1-2, VS 1-2, SI 1-2, I 1-3 and rows: Flawless, Internally Flawless, Very Very Slightly Included, Very Slightly Included, Slightly Included, Included



ADDITIONAL GRADING INFORMATION Polish EXCELLENT Symmetry EXCELLENT Fluorescence NONE Inscription(s) IGI LG769649033 Comments: This Laboratory Grown Diamond was created by Chemical Vapor Deposition (CVD) growth process. Type IIa



January 24, 2026 IGI Report No LG769649033 ROUND BRILLIANT 7.31 - 7.36 X 4.62 MM 1.56 CARAT E VVS 2 EXCELLENT 68% 57% Medium To Slightly Thick (Faceted) Pointed EXCELLENT EXCELLENT NONE IGI LG769649033 Comments: This Laboratory Grown Diamond was created by Chemical Vapor Deposition (CVD) growth process. Type IIa

