



ELECTRONIC COPY

LG769641609
Report verification at igi.org



February 4, 2026

IGI Report Number **LG769641609**

Description **LABORATORY GROWN DIAMOND**

Shape and Cutting Style **ROUND BRILLIANT**

Measurements **11.81 - 11.85 X 6.99 MM**

GRADING RESULTS

Carat Weight **6.02 CARATS**

Color Grade **E**

Clarity Grade **VVS 2**

Cut Grade **EXCELLENT**

February 4, 2026

IGI Report Number **LG769641609**

Description **LABORATORY GROWN DIAMOND**

Shape and Cutting Style **ROUND BRILLIANT**

Measurements **11.81 - 11.85 X 6.99 MM**

GRADING RESULTS

Carat Weight **6.02 CARATS**

Color Grade **E**

Clarity Grade **VVS 2**

Cut Grade **EXCELLENT**

ADDITIONAL GRADING INFORMATION

Polish **EXCELLENT**

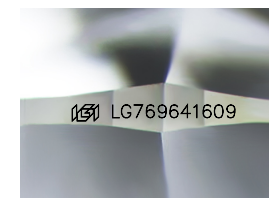
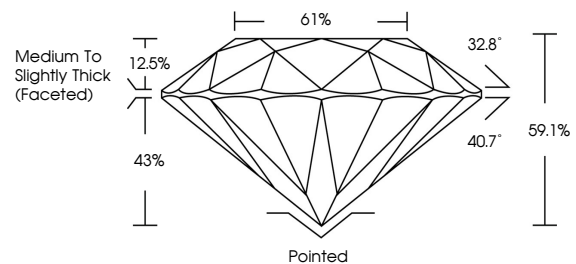
Symmetry **EXCELLENT**

Fluorescence **NONE**

Inscription(s) **IGI LG769641609**

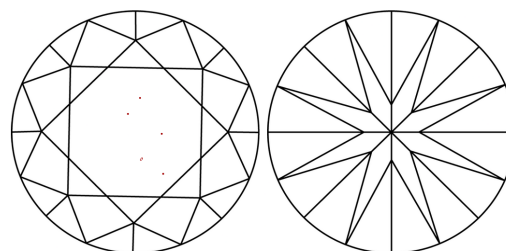
Comments: This Laboratory Grown Diamond was created by Chemical Vapor Deposition (CVD) growth process. Type IIa

PROPORTIONS



Sample Image Used

CLARITY CHARACTERISTICS



KEY TO SYMBOLS

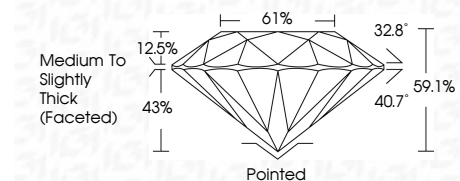
Red symbols indicate internal characteristics.
Green symbols indicate external characteristics.

COLOR

D E F G H I J Faint Very Light Light

CLARITY

FL	IF	VVS ¹⁻²	VS ¹⁻²	SI ¹⁻²	I ¹⁻³
Flawless	Internally Flawless	Very Very Slightly Included	Very Slightly Included	Slightly Included	Included



ADDITIONAL GRADING INFORMATION

Polish **EXCELLENT**

Symmetry **EXCELLENT**

Fluorescence **NONE**

Inscription(s) **IGI LG769641609**

Comments: This Laboratory Grown Diamond was created by Chemical Vapor Deposition (CVD) growth process. Type IIa



IGI



February 4, 2026	IGI Report No LG769641609	ROUND BRILLIANT	11.81 - 11.85 X 6.99 MM	6.02 CARATS	E	VVS 2	EXCELLENT	EXCELLENT	EXCELLENT	NONE	IGI LG769641609
Carat Weight	Color Grade	Clarity Grade	Cut Grade	Depth	Table	Grille	Culet	Polish	Symmetry	Fluorescence	Inscription(s)
Medium To Slightly Thick (Faceted)	Pointed	EXCELLENT	EXCELLENT	EXCELLENT	61%	61%	NONE	EXCELLENT	EXCELLENT	NONE	IGI LG769641609

Comments: This Laboratory Grown Diamond was created by Chemical Vapor Deposition (CVD) growth process. Type IIa