



**ELECTRONIC COPY**

LG769641275  
Report verification at igi.org



February 3, 2026

IGI Report Number **LG769641275**

Description **LABORATORY GROWN DIAMOND**

Shape and Cutting Style **ROUND BRILLIANT**

Measurements **8.04 - 8.08 X 5.01 MM**

**GRADING RESULTS**

Carat Weight **2.02 CARATS**

Color Grade **E**

Clarity Grade **VVS 2**

Cut Grade **IDEAL**

February 3, 2026  
IGI Report Number **LG769641275**  
Description **LABORATORY GROWN DIAMOND**  
Shape and Cutting Style **ROUND BRILLIANT**  
Measurements **8.04 - 8.08 X 5.01 MM**

**GRADING RESULTS**

Carat Weight **2.02 CARATS**

Color Grade **E**

Clarity Grade **VVS 2**

Cut Grade **IDEAL**

**ADDITIONAL GRADING INFORMATION**

Polish **EXCELLENT**

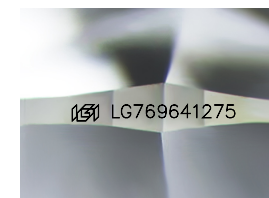
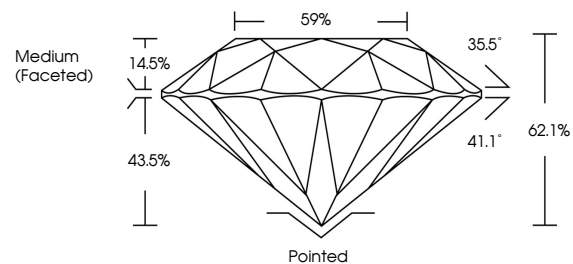
Symmetry **EXCELLENT**

Fluorescence **NONE**

Inscription(s) **IGI LG769641275**

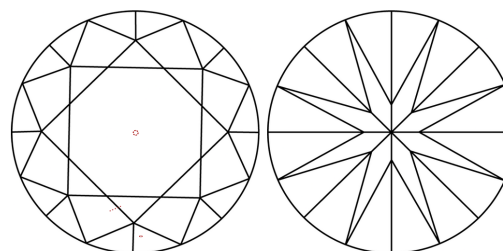
Comments: This Laboratory Grown Diamond was created by Chemical Vapor Deposition (CVD) growth process.  
Type IIa

**PROPORTIONS**



Sample Image Used

**CLARITY CHARACTERISTICS**



**KEY TO SYMBOLS**

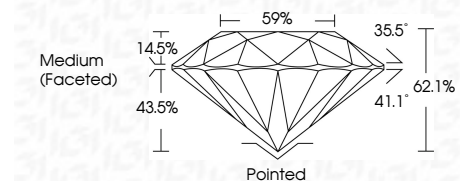
Red symbols indicate internal characteristics.  
Green symbols indicate external characteristics.

**COLOR**

D E F G H I J Faint Very Light Light

**CLARITY**

FL	IF	VVS <sup>1-2</sup>	VS <sup>1-2</sup>	SI <sup>1-2</sup>	I <sup>1-3</sup>
Flawless	Internally Flawless	Very Very Slightly Included	Very Slightly Included	Slightly Included	Included



**ADDITIONAL GRADING INFORMATION**

Polish **EXCELLENT**

Symmetry **EXCELLENT**

Fluorescence **NONE**

Inscription(s) **IGI LG769641275**

Comments: This Laboratory Grown Diamond was created by Chemical Vapor Deposition (CVD) growth process.  
Type IIa



**IGI**



February 3, 2026	IGI Report No LG769641275	ROUND BRILLIANT	8.04 - 8.08 X 5.01 MM	2.02 CARATS	E	VVS 2	IDEAL	59%	Medium (Faceted)	Pointed	EXCELLENT	EXCELLENT	NONE	IGI LG769641275
IGI	IGI	IGI	IGI	IGI	IGI	IGI	IGI	IGI	IGI	IGI	IGI	IGI	IGI	IGI

Comments: This Laboratory Grown Diamond was created by Chemical Vapor Deposition (CVD) growth process.  
Type IIa