



ELECTRONIC COPY

LG769641052 Report verification at igi.org



February 2, 2026 IGI Report Number LG769641052 Description LABORATORY GROWN DIAMOND Shape and Cutting Style SQUARE CUSHION MODIFIED BRILLIANT Measurements 7.52 X 7.48 X 5.11 MM GRADING RESULTS Carat Weight 2.52 CARATS Color Grade G Clarity Grade VVS 2

LABORATORY GROWN DIAMOND REPORT

February 2, 2026 IGI Report Number LG769641052 Description LABORATORY GROWN DIAMOND Shape and Cutting Style SQUARE CUSHION MODIFIED BRILLIANT Measurements 7.52 X 7.48 X 5.11 MM

GRADING RESULTS

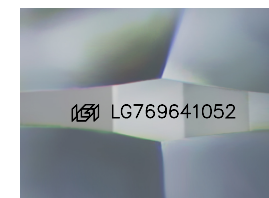
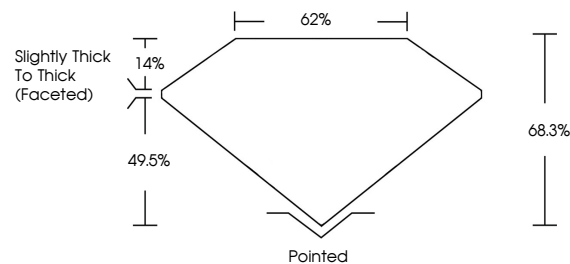
Carat Weight 2.52 CARATS Color Grade G Clarity Grade VVS 2

ADDITIONAL GRADING INFORMATION

Polish EXCELLENT Symmetry EXCELLENT Fluorescence NONE Inscription(s) IGI LG769641052

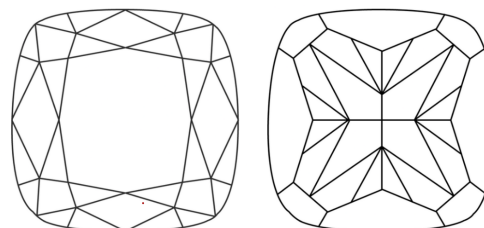
Comments: This Laboratory Grown Diamond was created by Chemical Vapor Deposition (CVD) growth process. Type IIa

PROPORTIONS



Sample Image Used

CLARITY CHARACTERISTICS



KEY TO SYMBOLS

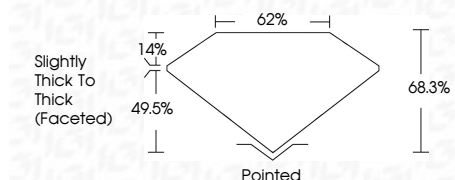
Red symbols indicate internal characteristics. Green symbols indicate external characteristics.

COLOR

D E F G H I J Faint Very Light Light

CLARITY

FL IF VVS 1-2 VS 1-2 SI 1-2 I 1-3 Flawless Internally Flawless Very Very Slightly Included Very Slightly Included Slightly Included Included



ADDITIONAL GRADING INFORMATION

Polish EXCELLENT Symmetry EXCELLENT Fluorescence NONE Inscription(s) IGI LG769641052 Comments: This Laboratory Grown Diamond was created by Chemical Vapor Deposition (CVD) growth process. Type IIa



February 2, 2026 IGI Report No LG769641052 SQUARE CUSHION MODIFIED BRILLIANT 7.52 X 7.48 X 5.11 MM 2.52 CARATS G VVS 2 68.3% 62% Slightly Thick To Thick (Faceted) Pointed EXCELLENT EXCELLENT NONE NONE IGI LG769641052 Comments: This Laboratory Grown Diamond was created by Chemical Vapor Deposition (CVD) growth process. Type IIa