



ELECTRONIC COPY

LG769639874
Report verification at igi.org



February 6, 2026

IGI Report Number **LG769639874**

Description **LABORATORY GROWN DIAMOND**

Shape and Cutting Style **SQUARE EMERALD CUT**

Measurements **7.10 X 7.04 X 4.41 MM**

GRADING RESULTS

Carat Weight **1.96 CARAT**

Color Grade **F**

Clarity Grade **VVS 2**

February 6, 2026

IGI Report Number **LG769639874**

Description **LABORATORY GROWN DIAMOND**

Shape and Cutting Style **SQUARE EMERALD CUT**

Measurements **7.10 X 7.04 X 4.41 MM**

GRADING RESULTS

Carat Weight **1.96 CARAT**

Color Grade **F**

Clarity Grade **VVS 2**

ADDITIONAL GRADING INFORMATION

Polish **EXCELLENT**

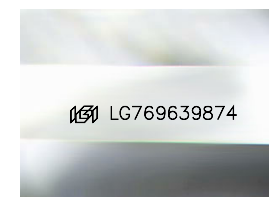
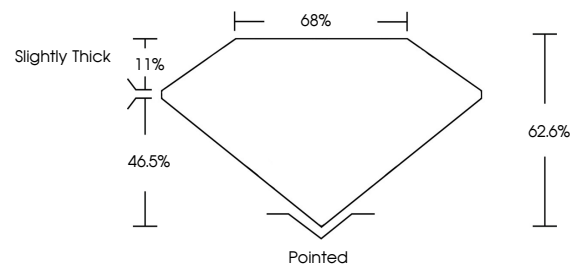
Symmetry **EXCELLENT**

Fluorescence **NONE**

Inscription(s) **IGI LG769639874**

Comments: This Laboratory Grown Diamond was created by Chemical Vapor Deposition (CVD) growth process.
Type IIa

PROPORTIONS



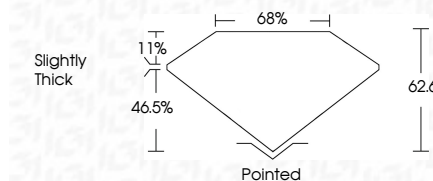
Sample Image Used

COLOR

D E F G H I J Faint Very Light Light

CLARITY

FL	IF	VS ¹⁻²	VS ¹⁻²	SI ¹⁻²	I ¹⁻³
Flawless	Internally Flawless	Very Very Slightly Included	Very Slightly Included	Slightly Included	Included



ADDITIONAL GRADING INFORMATION

Polish **EXCELLENT**

Symmetry **EXCELLENT**

Fluorescence **NONE**

Inscription(s) **IGI LG769639874**

Comments: This Laboratory Grown Diamond was created by Chemical Vapor Deposition (CVD) growth process.
Type IIa



IGI



February 6, 2026
IGI Report No LG769639874
SQUARE EMERALD CUT

1.96 CARAT
F

7.10 X 7.04 X 4.41 MM

Carat Weight
Color Grade
Clarity Grade
Table
Girdle
Culet
Polish
Symmetry
Fluorescence
Inscription(s)

1.96 CARAT
F
VVS 2
62.6%
65%
Slightly Thick
Pointed
EXCELLENT
EXCELLENT
NONE
IGI LG769639874

Comments: This Laboratory Grown Diamond was created by Chemical Vapor Deposition (CVD) growth process.
Type IIa