



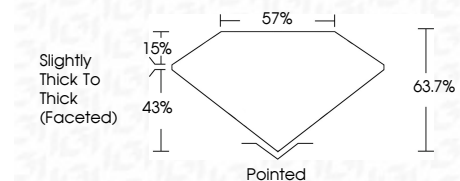
**ELECTRONIC COPY**

LG769636380  
Report verification at igi.org



January 29, 2026  
IGI Report Number **LG769636380**  
Description **LABORATORY GROWN DIAMOND**  
Shape and Cutting Style **OVAL BRILLIANT**  
Measurements **9.23 X 6.28 X 4.00 MM**

**GRADING RESULTS**  
Carat Weight **1.51 CARAT**  
Color Grade **D**  
Clarity Grade **VS 1**



**ADDITIONAL GRADING INFORMATION**  
Polish **EXCELLENT**  
Symmetry **EXCELLENT**  
Fluorescence **NONE**  
Inscription(s) **IGI LG769636380**  
Comments: This Laboratory Grown Diamond was created by Chemical Vapor Deposition (CVD) growth process. Type IIa



January 29, 2026  
IGI Report No LG769636380  
OVAL BRILLIANT  
1.51 CARAT  
D  
9.23 X 6.28 X 4.00 MM  
Carat Weight  
Color Grade  
Clarity Grade  
Depth  
Table  
Girdle  
Slightly Thick To Thick (Faceted)  
Pointed  
EXCELLENT  
EXCELLENT  
NONE  
IGI LG769636380  
Inscription(s)  
Comments: This Laboratory Grown Diamond was created by Chemical Vapor Deposition (CVD) growth process. Type IIa

**LABORATORY GROWN DIAMOND REPORT**

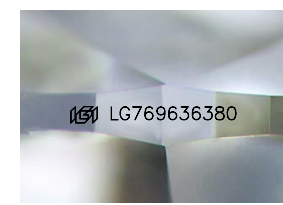
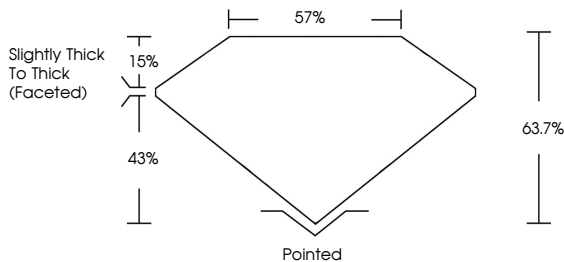
January 29, 2026  
IGI Report Number **LG769636380**  
Description **LABORATORY GROWN DIAMOND**  
Shape and Cutting Style **OVAL BRILLIANT**  
Measurements **9.23 X 6.28 X 4.00 MM**

**GRADING RESULTS**  
Carat Weight **1.51 CARAT**  
Color Grade **D**  
Clarity Grade **VS 1**

**ADDITIONAL GRADING INFORMATION**  
Polish **EXCELLENT**  
Symmetry **EXCELLENT**  
Fluorescence **NONE**  
Inscription(s) **IGI LG769636380**

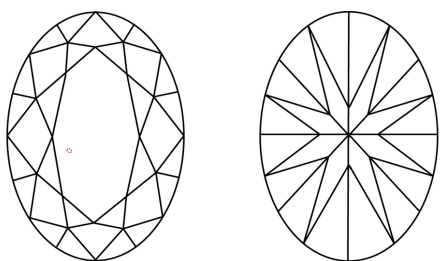
Comments: This Laboratory Grown Diamond was created by Chemical Vapor Deposition (CVD) growth process. Type IIa

**PROPORTIONS**



Sample Image Used

**CLARITY CHARACTERISTICS**



**KEY TO SYMBOLS**  
Red symbols indicate internal characteristics.  
Green symbols indicate external characteristics.

**COLOR**

D	E	F	G	H	I	J	Faint	Very Light	Light
---	---	---	---	---	---	---	-------	------------	-------

**CLARITY**

FL	IF	VS <sup>1-2</sup>	VS <sup>1-2</sup>	SI <sup>1-2</sup>	I <sup>1-3</sup>
Flawless	Internally Flawless	Very Very Slightly Included	Very Slightly Included	Slightly Included	Included

