



**ELECTRONIC COPY**

LG769634583  
Report verification at igi.org



January 23, 2026  
IGI Report Number **LG769634583**  
Description **LABORATORY GROWN DIAMOND**

Shape and Cutting Style **EMERALD CUT**  
Measurements **18.03 X 12.19 X 7.70 MM**

**GRADING RESULTS**

Carat Weight **17.00 CARATS**  
Color Grade **F**  
Clarity Grade **VS 1**

January 23, 2026  
IGI Report Number **LG769634583**  
Description **LABORATORY GROWN DIAMOND**  
Shape and Cutting Style **EMERALD CUT**  
Measurements **18.03 X 12.19 X 7.70 MM**

**GRADING RESULTS**

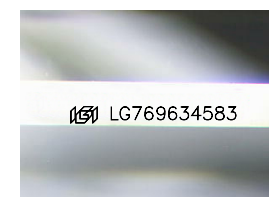
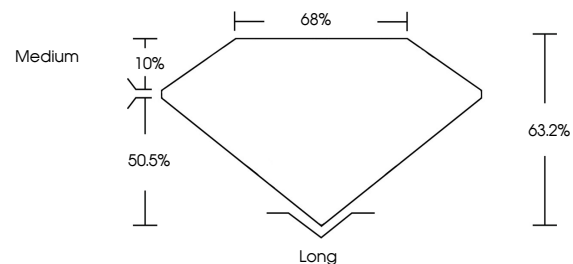
Carat Weight **17.00 CARATS**  
Color Grade **F**  
Clarity Grade **VS 1**

**ADDITIONAL GRADING INFORMATION**

Polish **EXCELLENT**  
Symmetry **EXCELLENT**  
Fluorescence **NONE**  
Inscription(s) **IGI LG769634583**

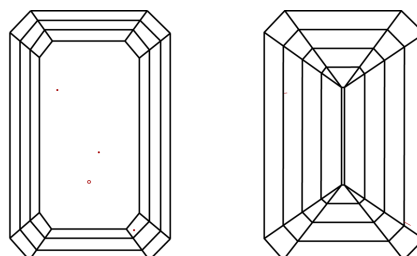
Comments: This Laboratory Grown Diamond was created by Chemical Vapor Deposition (CVD) growth process. Type IIa

**PROPORTIONS**



Sample Image Used

**CLARITY CHARACTERISTICS**



**KEY TO SYMBOLS**

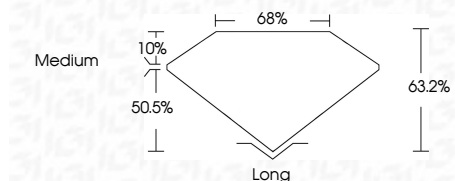
Red symbols indicate internal characteristics.  
Green symbols indicate external characteristics.

**COLOR**

D E F G H I J Faint Very Light Light

**CLARITY**

FL	IF	VS <sup>1-2</sup>	VS <sup>1-2</sup>	SI <sup>1-2</sup>	I <sup>1-3</sup>
Flawless	Internally Flawless	Very Very Slightly Included	Very Slightly Included	Slightly Included	Included



**ADDITIONAL GRADING INFORMATION**

Polish **EXCELLENT**  
Symmetry **EXCELLENT**  
Fluorescence **NONE**  
Inscription(s) **IGI LG769634583**  
Comments: This Laboratory Grown Diamond was created by Chemical Vapor Deposition (CVD) growth process. Type IIa



January 23, 2026  
IGI Report No. LG769634583  
EMERALD CUT  
18.03 X 12.19 X 7.70 MM  
17.00 CARATS  
Color Grade F  
Clarity Grade VS 1  
Depth 50.5%  
Table 10%  
Girdle Medium  
Culet Long  
Polish EXCELLENT  
Symmetry EXCELLENT  
Fluorescence NONE  
Inscription(s) IGI LG769634583  
Comments: This Laboratory Grown Diamond was created by Chemical Vapor Deposition (CVD) growth process. Type IIa