

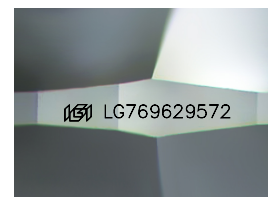
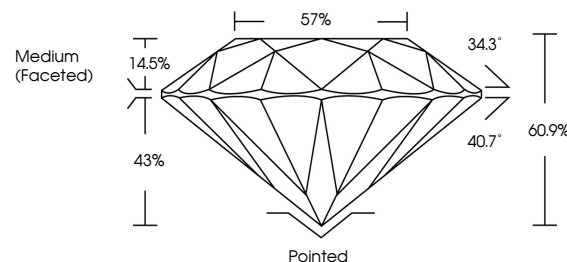


**ELECTRONIC COPY**

## LABORATORY GROWN DIAMOND REPORT

LG769629572  
Report verification at [igi.org](https://www.igi.org)

## PROPORTIONS



Sample Image Used

## CLARITY CHARACTERISTICS



## KEY TO SYMBOLS

Red symbols indicate internal characteristics.  
Green symbols indicate external characteristics.



**www.igi.org**

## LABORATORY GROWN DIAMOND REPORT



January 24, 2026

IGI Report Number **LG769629572**Description **LABORATORY GROWN DIAMOND**Shape and Cutting Style **ROUND BRILLIANT**

Measurements 9.57 - 9.62 X 5.85 MM

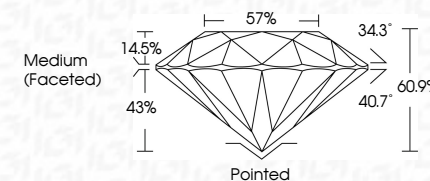
## GRADING RESULTS

Carat Weight **3.30 CARATS**

Color Grade	D
-------------	---

Clarity Grade **INTERNALLY FLAWLESS**

Cut Grade **IDEAL**



### ADDITIONAL GRADING INFORMATION

Polish **EXCELLENT**Symmetry **EXCELLENT**Fluorescence **NONE**Inscription(s) **113** LG769629572

Comments: HEARTS & ARROWS

As Grown - No indication of post-growth treatment.

This Laboratory Grown Diamond was created by High Pressure High Temperature (HPHT) growth process.

Type II



January 24, 2026	3.30 CARATS	Pointed	Comments: This diamond is as Grown - No indication of post-growth treatment. The Laboratory Grown Diamond was created by High Pressure High Temperature (HPHT) growth process.
GI Report No: US16929572	D	IF	
ROUND BRILLIANT	Color Grade	IDEAL	
	Clarity Grade	60.9%	
	Carat Grade	57%	
15.57 - 5.42 X 5.88 MM	Table	Medium (Faceted)	
	Depth		
	Girdle		
	Culet		
	Polish		
	Symmetry		
	Fluorescence		
	Inscriptions(s)		
			491 US16929572

© IGI 2020, International Gemological Institute

FD - 10 20



THIS DOCUMENT WAS PRODUCED WITH THE FOLLOWING SECURITY MEASURES: SPECIAL DOCUMENT PAPER, INK SCREENS, WATERMARK, BACKGROUND DESIGNS, HOLOGRAM AND OTHER SECURITY FEATURES NOT LISTED AND DO EXCEED DOCUMENT SECURITY INDUSTRY GUIDELINE