

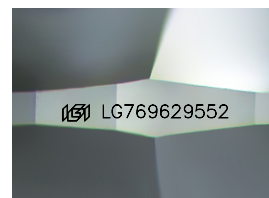
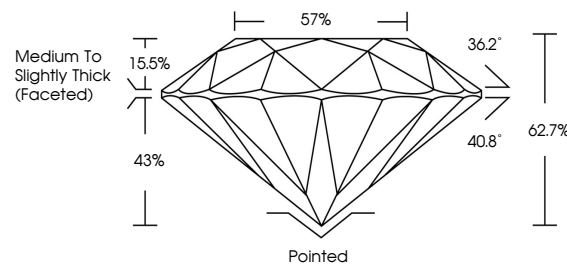


ELECTRONIC COPY

LABORATORY GROWN DIAMOND REPORT

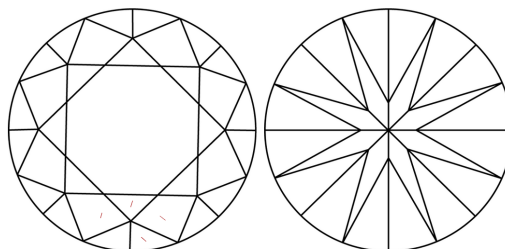
LG769629552
Report verification at lgi.org

PROPORTIONS



Sample Image Used

CLARITY CHARACTERISTICS



KEY TO SYMBOLS

Red symbols indicate internal characteristics.
Green symbols indicate external characteristics.

COLOR

D E F G H I J Faint Very Light Light

CLARITY

FL	IF	VVS ¹⁻²	VS ¹⁻²	SI ¹⁻²	I ¹⁻³
Flawless	Internally Flawless	Very Very Slightly Included	Very Slightly Included	Slightly Included	Included

LABORATORY GROWN DIAMOND REPORT



January 24, 2026

IGI Report Number **LG769629552**Description **LABORATORY GROWN DIAMOND**Shape and Cutting Style **ROUND BRILLIANT**

Measurements 6.43 - 6.46 X 4.04 MM

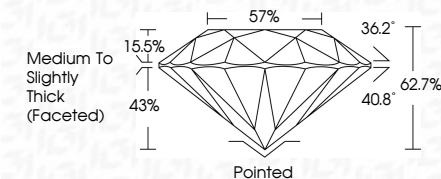
GRADING RESULTS

Carat Weight **1.04 CARAT**

Color Grade D

Clarity Grade **VVS 2**

Cut Grade **EXCELLENT**



ADDITIONAL GRADING INFORMATION

Polish **EXCELLENT**Symmetry **EXCELLENT**Fluorescence **NONE**Inscription(s) LG769629552

Comments: As Grown - No indication of post-growth treatment.

This Laboratory Grown Diamond was created by High Pressure High Temperature (HPHT) growth process.
Type II



IG



© IGI 2020, International Gemological Institute

FD - 10 20



THIS DOCUMENT WAS PRODUCED WITH THE FOLLOWING SECURITY MEASURES: SPECIAL DOCUMENT PAPER, INK SCREENS, WATERMARK, BACKGROUND DESIGNS, HOLOGRAM AND OTHER SECURITY FEATURES NOT LISTED AND DO EXCEED DOCUMENT SECURITY INDUSTRY GUIDELINES

www.igi.org

January 24, 2026	1.04 CARAT	WVS 2	Paired	Excellent	None	#61157692952	Comments: No indication of post-growth treatment.
GI Report No. L57692952	Color Grade	Clarity Grade	Cut Grade	Excellent			
ROUND BRILLIANT	4.63 - 4.65 x 4.04 MM	Color White	Color White	Depth	62.7%	Medium to slightly thick (faceted)	This Laboratory Grown Diamond was created by High Pressure High Temperature (HPHT) growth process.
		Table	Girdle	57%			
			Culet	Polish	Symmetry	Fluorescence	Typical
					Fluorescence (mm)		