



ELECTRONIC COPY

LG769629201
Report verification at igi.org



January 23, 2026
IGI Report Number **LG769629201**
Description **LABORATORY GROWN DIAMOND**
Shape and Cutting Style **CUSHION MODIFIED BRILLIANT**
Measurements **9.90 X 7.66 X 5.17 MM**
GRADING RESULTS
Carat Weight **3.10 CARATS**
Color Grade **D**
Clarity Grade **INTERNALLY FLAWLESS**

January 23, 2026
IGI Report Number **LG769629201**
Description **LABORATORY GROWN DIAMOND**
Shape and Cutting Style **CUSHION MODIFIED BRILLIANT**
Measurements **9.90 X 7.66 X 5.17 MM**

GRADING RESULTS

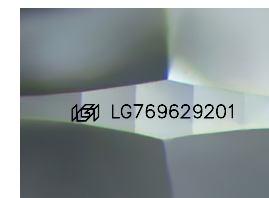
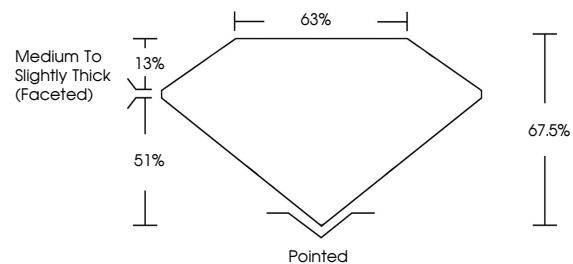
Carat Weight **3.10 CARATS**
Color Grade **D**
Clarity Grade **INTERNALLY FLAWLESS**

ADDITIONAL GRADING INFORMATION

Polish **EXCELLENT**
Symmetry **EXCELLENT**
Fluorescence **NONE**
Inscription(s) **IGI LG769629201**

Comments: As Grown - No indication of post-growth treatment.
This Laboratory Grown Diamond was created by High Pressure High Temperature (HPHT) growth process.
Type II

PROPORTIONS



Sample Image Used

CLARITY CHARACTERISTICS



KEY TO SYMBOLS

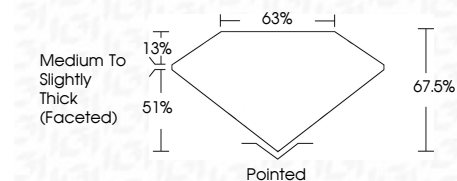
Red symbols indicate internal characteristics.
Green symbols indicate external characteristics.

COLOR

D E F G H I J Faint Very Light Light

CLARITY

FL	IF	VS ¹⁻²	VS ¹⁻²	SI ¹⁻²	I ¹⁻³
Flawless	Internally Flawless	Very Very Slightly Included	Very Slightly Included	Slightly Included	Included



ADDITIONAL GRADING INFORMATION

Polish **EXCELLENT**
Symmetry **EXCELLENT**
Fluorescence **NONE**
Inscription(s) **IGI LG769629201**
Comments: As Grown - No indication of post-growth treatment.
This Laboratory Grown Diamond was created by High Pressure High Temperature (HPHT) growth process.
Type II



January 23, 2026
IGI Report No LG769629201
CUSHION MODIFIED BRILLIANT
9.90 X 7.66 X 5.17 MM
3.10 CARATS
D
3.10 CARATS
D
67.5%
63%
Medium to Slightly Thick (Faceted)
Pointed
EXCELLENT
EXCELLENT
NONE
IGI LG769629201
Comments: As Grown - No indication of post-growth treatment.
This Laboratory Grown Diamond was created by High Pressure High Temperature (HPHT) growth process.
Type II