

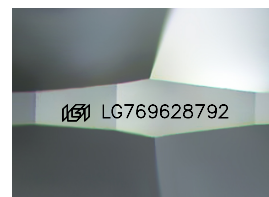
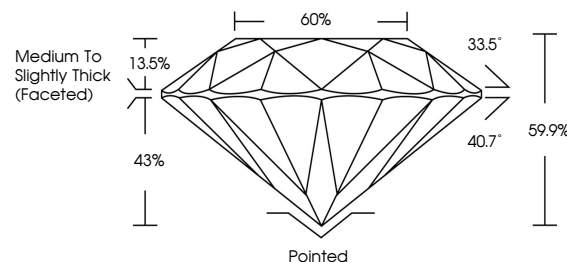


ELECTRONIC COPY

LABORATORY GROWN DIAMOND REPORT

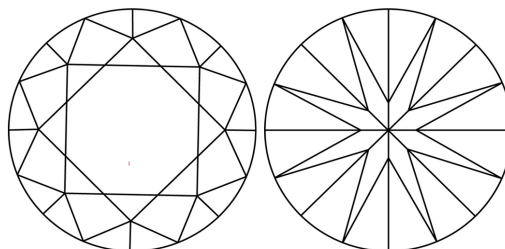
LG769628792
Report verification at lgi.org

PROPORTIONS



Sample Image Used

CLARITY CHARACTERISTICS



KEY TO SYMBOLS

Red symbols indicate internal characteristics.
Green symbols indicate external characteristics.

COLOR

D E F G H I J Faint Very Light Light

CLARITY

FL	IF	VVS ¹⁻²	VS ¹⁻²	SI ¹⁻²	I ¹⁻³
Flawless	Internally Flawless	Very Very Slightly Included	Very Slightly Included	Slightly Included	Included

LABORATORY GROWN DIAMOND REPORT



January 23, 2026

IGI Report Number **LG769628792**Description **LABORATORY GROWN DIAMOND**Shape and Cutting Style **ROUND BRILLIANT**

Measurements 7.91 - 7.96 X 4.76 MM

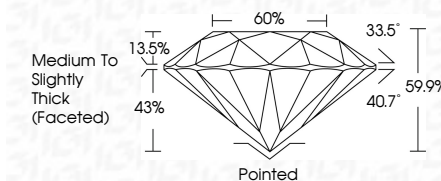
GRADING RESULTS

Carat Weight 1.85 CARAT

Color Grade

Clarity Grade VVS 2

Cut Grade **IDEAL**



ADDITIONAL GRADING INFORMATION

Polish **EXCELLENT**Symmetry **EXCELLENT**Fluorescence **NONE**Inscription(s)  LG769628792

Comments: This Laboratory Grown Diamond was created by Chemical Vapor Deposition (CVD) growth process.
Type IIa



© IGI 2020, International Gemological Institute

FD - 10 20



THIS DOCUMENT WAS PRODUCED WITH THE FOLLOWING SECURITY MEASURES: SPECIAL DOCUMENT PAPER, INK SCREENS, WATERMARK, BACKGROUND DESIGNS, HOLOGRAM, AND OTHER SECURITY FEATURES NOT LISTED AND DO EXCEED DOCUMENT SECURITY INDUSTRY GUIDELINES.

www.igi.org

January 23, 2026
GI Report No LG769628792
ROUND BRILLIANT

Carat Weight	1.91 - 7.96 X 4.76 MM	1.85 CARAT
Color Grade	Colorless	D
Clarity Grade	Clarity Grade	VVS 2
Cut Grade	Cut Grade	IDEAL
Depth	66.1%	66.9%
Table	92.9%	93.6%
Grade	Medium to Slightly Thick (Faceted)	60%
Culet	Pointed	Pointed
Polish	Excellent	EXCELLENT
Symmetry	Excellent	EXCELLENT
Fluorescence	None	NONE

Comments:
This Laboratory Grown Diamond was
created by Chemical Vapor Deposition
(CVD) growth process.