



ELECTRONIC COPY

LG769628760
Report verification at igi.org



January 23, 2026

IGI Report Number **LG769628760**

Description **LABORATORY GROWN DIAMOND**

Shape and Cutting Style **ROUND BRILLIANT**

Measurements **7.34 - 7.38 X 4.62 MM**

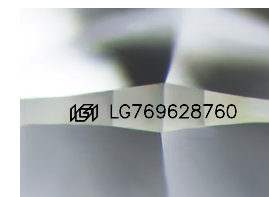
GRADING RESULTS

Carat Weight **1.55 CARAT**

Color Grade **D**

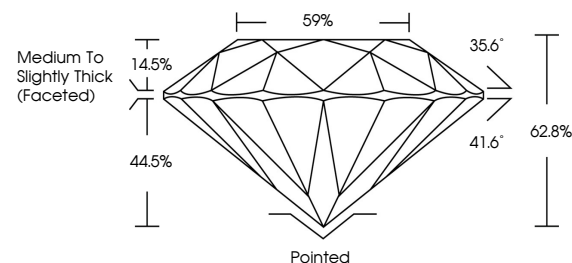
Clarity Grade **VVS 2**

Cut Grade **EXCELLENT**

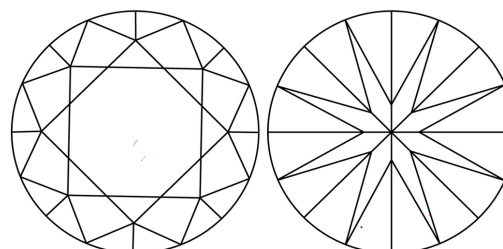


Sample Image Used

PROPORTIONS



CLARITY CHARACTERISTICS



KEY TO SYMBOLS

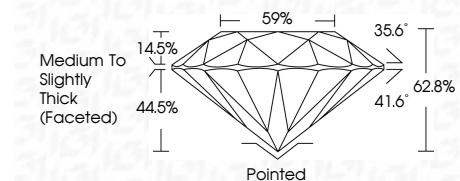
Red symbols indicate internal characteristics.
Green symbols indicate external characteristics.

COLOR

D E F G H I J Faint Very Light Light

CLARITY

FL	IF	VVS ¹⁻²	VS ¹⁻²	SI ¹⁻²	I ¹⁻³
Flawless	Internally Flawless	Very Very Slightly Included	Very Slightly Included	Slightly Included	Included



ADDITIONAL GRADING INFORMATION

Polish **EXCELLENT**

Symmetry **EXCELLENT**

Fluorescence **NONE**

Inscription(s) **IGI LG769628760**

Comments: This Laboratory Grown Diamond was created by Chemical Vapor Deposition (CVD) growth process. Type IIa



IGI



January 23, 2026
IGI Report No LG769628760
ROUND BRILLIANT

1.55 CARAT
Color Grade D
Clarity Grade VVS 2
Depth 62.8%
Table 59%
Medium To Slightly Thick (Faceted)

Pointed
Polish EXCELLENT
Symmetry EXCELLENT
Fluorescence NONE
Inscription(s) IGI LG769628760

Comments: This Laboratory Grown Diamond was created by Chemical Vapor Deposition (CVD) growth process. Type IIa