



ELECTRONIC COPY

LG769626991
Report verification at igi.org



January 28, 2026

IGI Report Number **LG769626991**

Description **LABORATORY GROWN DIAMOND**

Shape and Cutting Style **ROUND BRILLIANT**

Measurements **10.66 - 10.71 X 6.52 MM**

GRADING RESULTS

Carat Weight **4.59 CARATS**

Color Grade **E**

Clarity Grade **VS 1**

Cut Grade **IDEAL**

January 28, 2026

IGI Report Number **LG769626991**

Description **LABORATORY GROWN DIAMOND**

Shape and Cutting Style **ROUND BRILLIANT**

Measurements **10.66 - 10.71 X 6.52 MM**

GRADING RESULTS

Carat Weight **4.59 CARATS**

Color Grade **E**

Clarity Grade **VS 1**

Cut Grade **IDEAL**

ADDITIONAL GRADING INFORMATION

Polish **EXCELLENT**

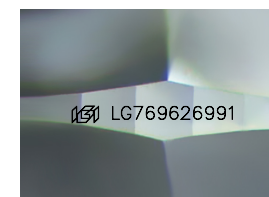
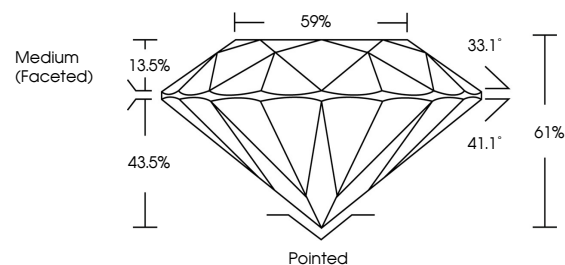
Symmetry **EXCELLENT**

Fluorescence **NONE**

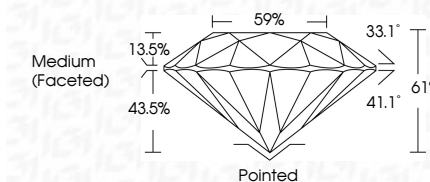
Inscription(s) **IGI LG769626991**

Comments: This Laboratory Grown Diamond was created by Chemical Vapor Deposition (CVD) growth process. Type IIa

PROPORTIONS



Sample Image Used



COLOR

D E F G H I J Faint Very Light Light

CLARITY

FL	IF	VS ¹⁻²	VS ¹⁻²	SI ¹⁻²	I ¹⁻³
Flawless	Internally Flawless	Very Very Slightly Included	Very Slightly Included	Slightly Included	Included

ADDITIONAL GRADING INFORMATION

Polish **EXCELLENT**

Symmetry **EXCELLENT**

Fluorescence **NONE**

Inscription(s) **IGI LG769626991**

Comments: This Laboratory Grown Diamond was created by Chemical Vapor Deposition (CVD) growth process. Type IIa



IGI



January 28, 2026
IGI Report No LG769626991
ROUND BRILLIANT

10.66 - 10.71 X 6.52 MM

4.59 CARATS

E

VS 1

IDEAL

61%

59%

Medium (Faceted)

Pointed

EXCELLENT

EXCELLENT

NONE

IGI LG769626991

Comments: This Laboratory Grown Diamond was created by Chemical Vapor Deposition (CVD) growth process. Type IIa