



**ELECTRONIC COPY**

LG769625018  
Report verification at igi.org



January 28, 2026

IGI Report Number **LG769625018**

Description **LABORATORY GROWN DIAMOND**

Shape and Cutting Style **ROUND BRILLIANT**

Measurements **6.55 - 6.60 X 3.85 MM**

**GRADING RESULTS**

Carat Weight **1.00 CARAT**

Color Grade **F**

Clarity Grade **SI 1**

Cut Grade **EXCELLENT**

January 28, 2026  
IGI Report Number **LG769625018**  
Description **LABORATORY GROWN DIAMOND**  
Shape and Cutting Style **ROUND BRILLIANT**  
Measurements **6.55 - 6.60 X 3.85 MM**

**GRADING RESULTS**

Carat Weight **1.00 CARAT**

Color Grade **F**

Clarity Grade **SI 1**

Cut Grade **EXCELLENT**

**ADDITIONAL GRADING INFORMATION**

Polish **EXCELLENT**

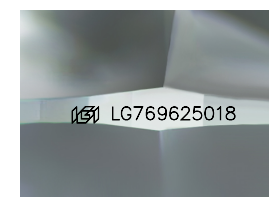
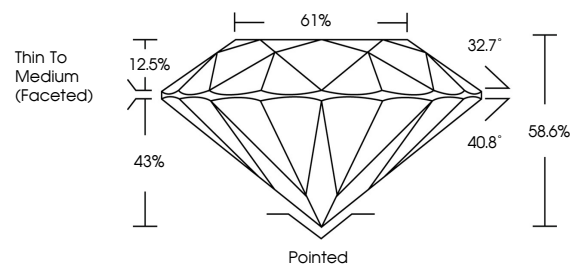
Symmetry **EXCELLENT**

Fluorescence **NONE**

Inscription(s) **IGI LG769625018**

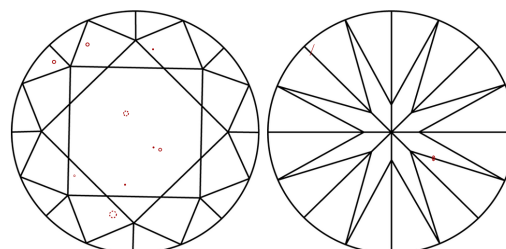
Comments: This Laboratory Grown Diamond was created by Chemical Vapor Deposition (CVD) growth process.  
Type IIa

**PROPORTIONS**



Sample Image Used

**CLARITY CHARACTERISTICS**



**KEY TO SYMBOLS**

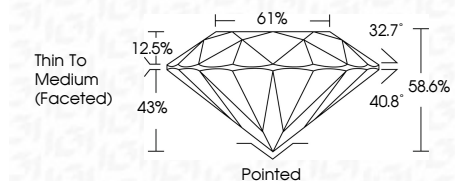
Red symbols indicate internal characteristics.  
Green symbols indicate external characteristics.

**COLOR**

D E F G H I J Faint Very Light Light

**CLARITY**

FL	IF	VS <sup>1-2</sup>	VS <sup>1-2</sup>	SI <sup>1-2</sup>	I <sup>1-3</sup>
Flawless	Internally Flawless	Very Very Slightly Included	Very Slightly Included	Slightly Included	Included



**ADDITIONAL GRADING INFORMATION**

Polish **EXCELLENT**

Symmetry **EXCELLENT**

Fluorescence **NONE**

Inscription(s) **IGI LG769625018**

Comments: This Laboratory Grown Diamond was created by Chemical Vapor Deposition (CVD) growth process.  
Type IIa



January 28, 2026  
IGI Report No LG769625018  
ROUND BRILLIANT  
6.55 - 6.60 X 3.85 MM  
1.00 CARAT  
F  
SI 1  
EXCELLENT  
EXCELLENT  
61%  
Thin To Medium (Faceted)  
Pointed  
EXCELLENT  
EXCELLENT  
NONE  
NONE  
IGI LG769625018

Comments: This Laboratory Grown Diamond was created by Chemical Vapor Deposition (CVD) growth process.  
Type IIa