



ELECTRONIC COPY

LG769624993
Report verification at igi.org



February 5, 2026

IGI Report Number **LG769624993**

Description **LABORATORY GROWN DIAMOND**

Shape and Cutting Style **EMERALD CUT**

Measurements **7.17 X 4.50 X 3.07 MM**

GRADING RESULTS

Carat Weight **1.03 CARAT**

Color Grade **FANCY LIGHT YELLOW**

Clarity Grade **VS 2**

LABORATORY GROWN DIAMOND REPORT

February 5, 2026

IGI Report Number **LG769624993**

Description **LABORATORY GROWN DIAMOND**

Shape and Cutting Style **EMERALD CUT**

Measurements **7.17 X 4.50 X 3.07 MM**

GRADING RESULTS

Carat Weight **1.03 CARAT**

Color Grade **FANCY LIGHT YELLOW**

Clarity Grade **VS 2**

ADDITIONAL GRADING INFORMATION

Polish **EXCELLENT**

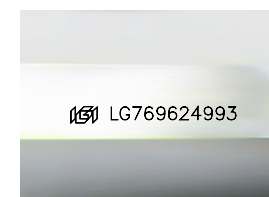
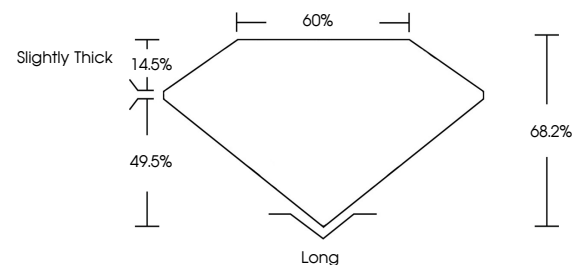
Symmetry **EXCELLENT**

Fluorescence **VERY SLIGHT**

Inscription(s) **IGI LG769624993**

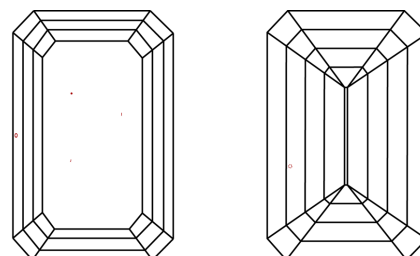
Comments: This Laboratory Grown Diamond was created by Chemical Vapor Deposition (CVD) growth process. Indications of post-growth treatment.

PROPORTIONS



Sample Image Used

CLARITY CHARACTERISTICS



KEY TO SYMBOLS

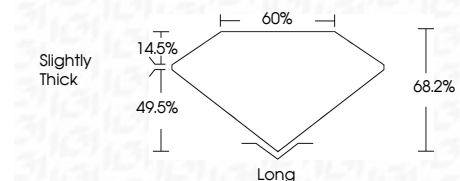
Red symbols indicate internal characteristics.
Green symbols indicate external characteristics.

COLOR

D E F G H I J Faint Very Light Light

CLARITY

FL	IF	VS ¹⁻²	VS ¹⁻²	SI ¹⁻²	I ¹⁻³
Flawless	Internally Flawless	Very Very Slightly Included	Very Slightly Included	Slightly Included	Included



ADDITIONAL GRADING INFORMATION

Polish **EXCELLENT**

Symmetry **EXCELLENT**

Fluorescence **VERY SLIGHT**

Inscription(s) **IGI LG769624993**

Comments: This Laboratory Grown Diamond was created by Chemical Vapor Deposition (CVD) growth process. Indications of post-growth treatment.



February 5, 2026	IGI Report No. LG769624993	EMERALD CUT	1.03 CARAT	FANCY LIGHT YELLOW	VS 2	68.2%	60%	Slightly Thick	Long	EXCELLENT	EXCELLENT	VERY SLIGHT	IGI LG769624993
			Carat Weight	Color Grade	Clarity Grade	Table	Girdle	Culet	Polish	Symmetry	Fluorescence	Inscription(s)	

Comments: This Laboratory Grown Diamond was created by Chemical Vapor Deposition (CVD) growth process. Indications of post-growth treatment.