



ELECTRONIC COPY

LG769624499
Report verification at igi.org



February 9, 2026
IGI Report Number **LG769624499**
Description **LABORATORY GROWN DIAMOND**
Shape and Cutting Style **CUSHION MODIFIED BRILLIANT**
Measurements **15.23 X 11.16 X 7.12 MM**
GRADING RESULTS
Carat Weight **10.54 CARATS**
Color Grade **FANCY INTENSE ORANGY PINK**
Clarity Grade **VS 2**

LABORATORY GROWN DIAMOND REPORT

February 9, 2026
IGI Report Number **LG769624499**
Description **LABORATORY GROWN DIAMOND**
Shape and Cutting Style **CUSHION MODIFIED BRILLIANT**
Measurements **15.23 X 11.16 X 7.12 MM**

GRADING RESULTS

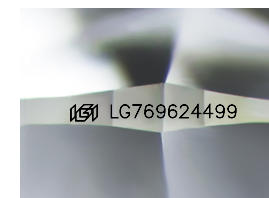
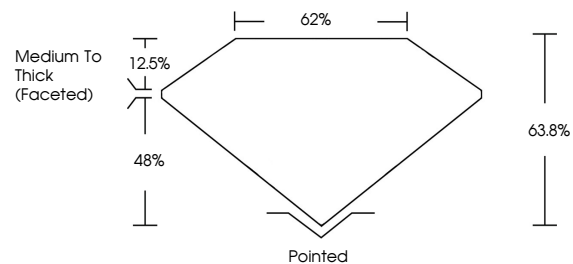
Carat Weight **10.54 CARATS**
Color Grade **FANCY INTENSE ORANGY PINK**
Clarity Grade **VS 2**

ADDITIONAL GRADING INFORMATION

Polish **EXCELLENT**
Symmetry **EXCELLENT**
Fluorescence **SLIGHT**
Inscription(s) **IGI LG769624499**

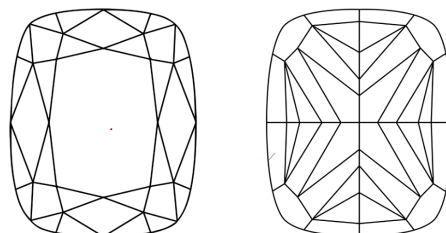
Comments: This Laboratory Grown Diamond was created by Chemical Vapor Deposition (CVD) growth process. Indications of post-growth treatment.

PROPORTIONS



Sample Image Used

CLARITY CHARACTERISTICS



KEY TO SYMBOLS

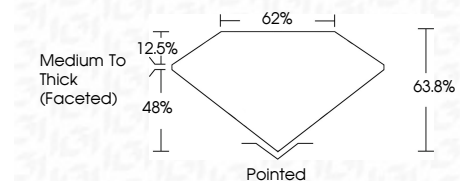
Red symbols indicate internal characteristics.
Green symbols indicate external characteristics.

COLOR

D E F G H I J Faint Very Light Light

CLARITY

FL	IF	VS ¹⁻²	VS ¹⁻²	SI ¹⁻²	I ¹⁻³
Flawless	Internally Flawless	Very Very Slightly Included	Very Slightly Included	Slightly Included	Included



ADDITIONAL GRADING INFORMATION

Polish **EXCELLENT**
Symmetry **EXCELLENT**
Fluorescence **SLIGHT**
Inscription(s) **IGI LG769624499**
Comments: This Laboratory Grown Diamond was created by Chemical Vapor Deposition (CVD) growth process. Indications of post-growth treatment.



February 9, 2026
IGI Report No **LG769624499**
CUSHION MODIFIED BRILLIANT
10.54 CARATS
Carat Weight
Color Grade **FANCY INTENSE ORANGY PINK**
Clarity Grade **VS 2**
Depth **63.8%**
Table **62%**
Girdle **Medium To Thick (Faceted)**
Culet **Pointed**
Polish **EXCELLENT**
Symmetry **EXCELLENT**
Fluorescence **SLIGHT**
Inscription(s) **IGI LG769624499**
Comments: This Laboratory Grown Diamond was created by Chemical Vapor Deposition (CVD) growth process. Indications of post-growth treatment.